

LOC I-RVS	APP CRS	Rwy Idg TDZE	5102
109.95	010°	Apt Elev	626
			638

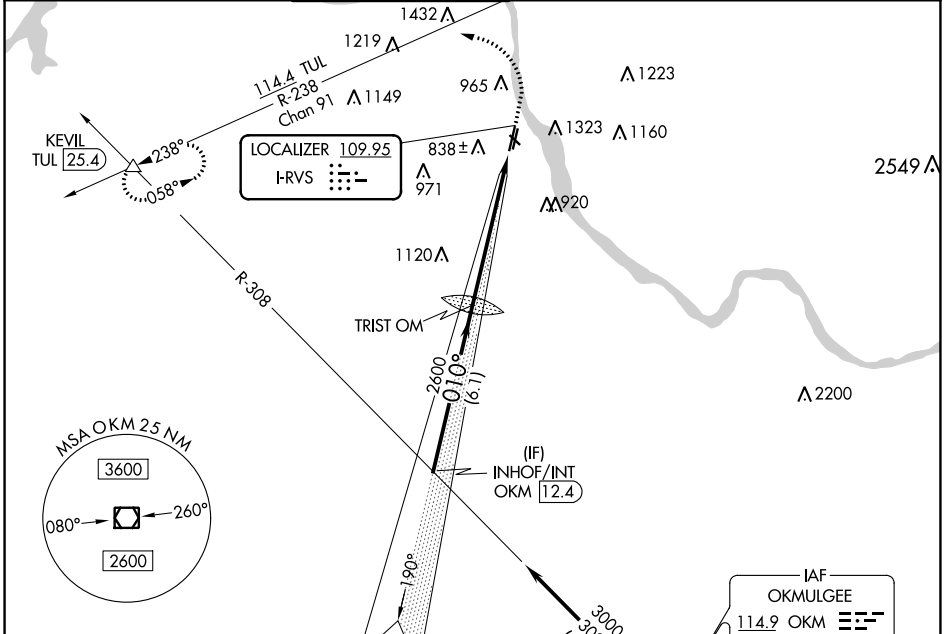
ILS or LOC RWY 1L

RICHARD LLOYD JONES JR (RVS)

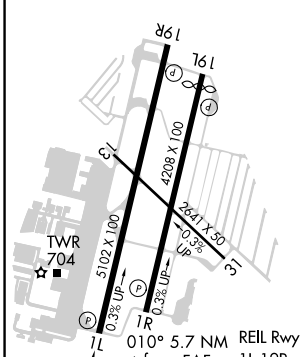
⚠ Circling NA northeast of Rwsy 31 and 19L.

⚠ MISSED APPROACH: Climb to 1500 then climbing left turn to 2600 on heading 280° and TUL VORTAC R-238 to KEVIL INT/TUL 25.4 DME and hold.

ATIS 126.5	TULSA APP CON 134.7	RIVERSIDE TOWER ★ 120.3 (CTAF) 0	GND CON 121.7	CLNC DEL 124.5	UNICOM 122.95
----------------------	-------------------------------	---	-------------------------	--------------------------	-------------------------

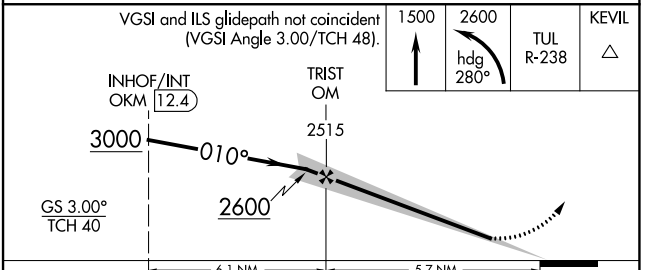


ELEV 638	D	TDZE 626
----------	----------	----------



Procedure NA for arrival on OKM VOR/DME airway radials 308 CW 359.

IAF OKMULGEE 114.9 OKM Chan 96



FAF to MAP 5.7 NM					
Knots	60	90	120	150	180
Min:Sec	5:42	3:48	2:51	2:17	1:54
CIRCLING	1260-1 622 (700-1)	1280-1 642 (700-1)	1280-1 3/4 642 (700-1 3/4)	1360-2 1/4 722 (800-2 1/4)	

SC-1, 10 SEP 2020 to 08 OCT 2020

SC-1, 10 SEP 2020 to 08 OCT 2020