

TULSA, OKLAHOMA

AL-5427 (FAA)

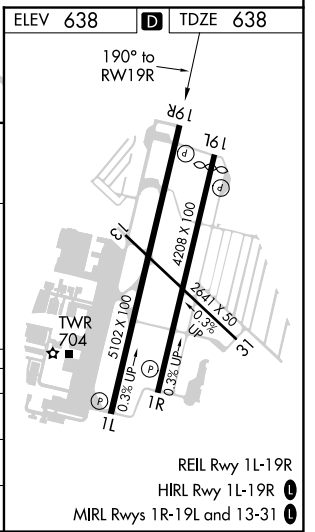
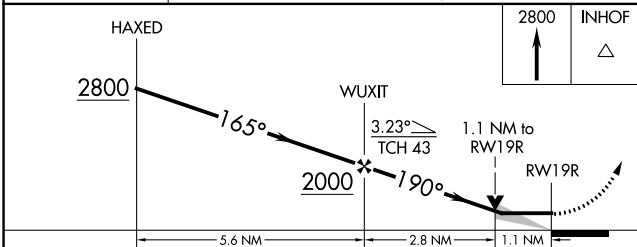
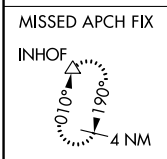
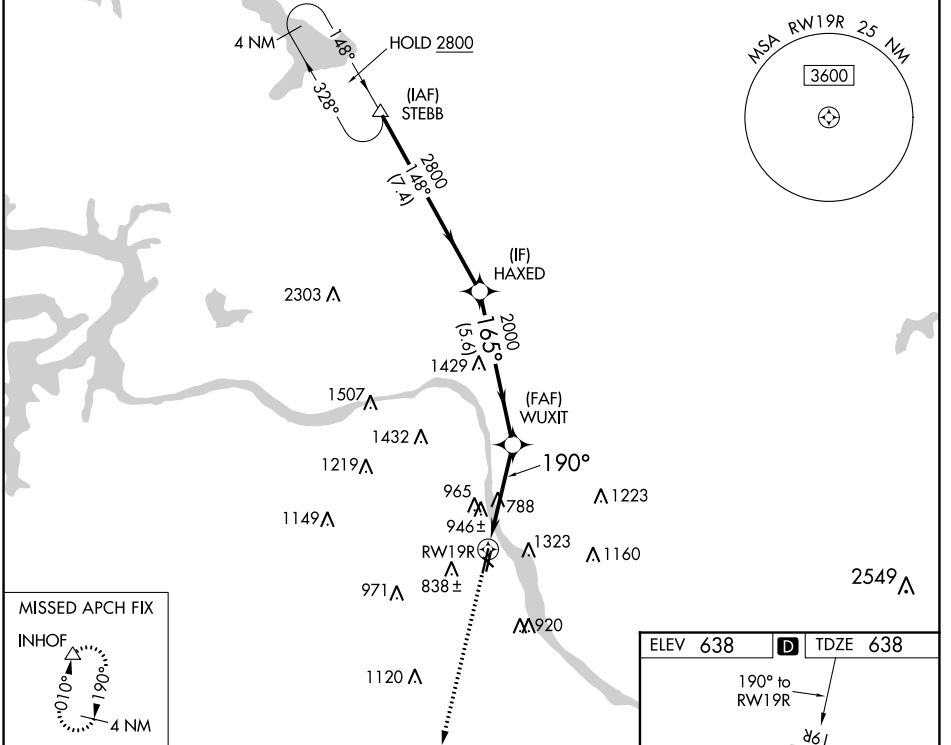
20030

WAAS CH 81939 W19A	APP CRS 190°	Rwy Idg TDZE 638 Apt Elev 638	5102
--	------------------------	---	-------------

RNAV (GPS) RWY 19R

RICHARD LLOYD JONES JR (RVS)

<p>V Circling NA northeast of Rwy 31 and 19L. DME/DME RNP-0.3 NA.</p>		<p>MISSED APPROACH: Climb to 2800 direct INHOF and hold.</p>			
ATIS 126.5	TULSA APP CON 134.7	RIVERSIDE TOWER ★ 120.3 (CTAF) 0	GND CON 121.7	CLNC DEL 124.5	UNICOM 122.95



CATEGORY	A	B	C	D
LP MDA	1040-1	402 (500-1)	1040-1 $\frac{1}{8}$	402 (500-1 $\frac{1}{8}$)
LNAV MDA	1200-1	562 (600-1)	1200-1 $\frac{5}{8}$	562 (600-1 $\frac{5}{8}$)
C CIRCLING	1260-1 622 (700-1)	1280-1 642 (700-1)	1280-1 $\frac{3}{4}$ 642 (700-1 $\frac{3}{4}$)	1380-2 $\frac{1}{2}$ 742 (800-2 $\frac{1}{2}$)

REIL Rwy 1L-19R
HIRL Rwy 1L-19R **0**
MIRL Rwy 1R-19L and 13-31 **0**

TULSA, OKLAHOMA
Amdt 1 02MAR17

36°02'N-95°59'W

RICHARD LLOYD JONES JR (RVS)

RNAV (GPS) RWY 19R

SC-1, 10 SEP 2020 to 08 OCT 2020

SC-1, 10 SEP 2020 to 08 OCT 2020