

WAAS CH 97321 W01A	APP CRS 010°	Rwy Idg TDZE 626 Apt Elev 638
--	------------------------	---

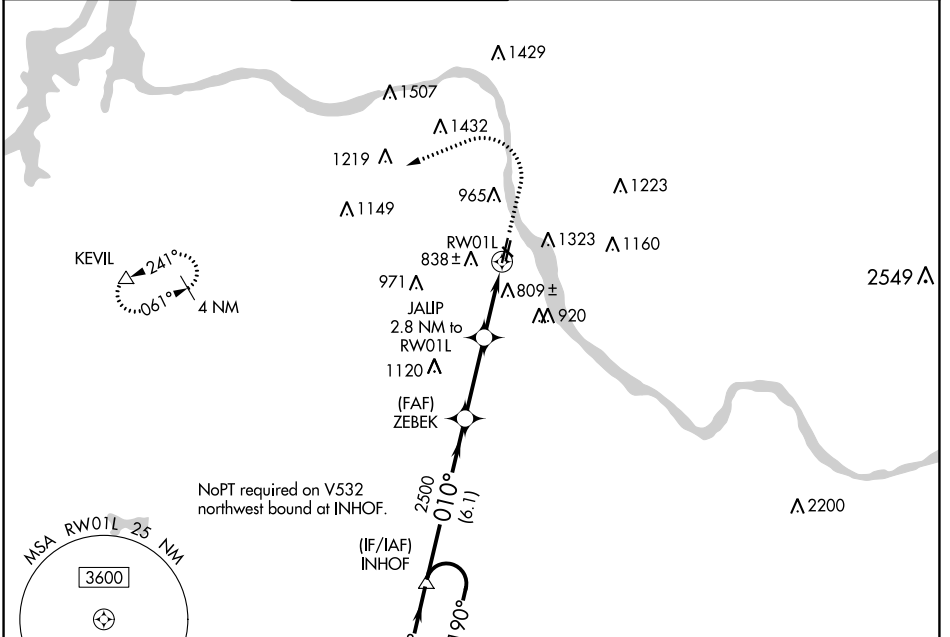
RNAV (GPS) RWY 1L

RICHARD LLOYD JONES JR (RVS)

⚠ For uncompensated Baro-VNAV systems, LNAV/VNAV NA below -12°C (11°F) or above 54°C (130°F). Circling NA northeast of Rwys 31 and 19L. DME/DME RNP-0.3 NA.

⚠ MISSED APPROACH: Climb to 1100 then climbing left turn to 2600 direct KEVIL and hold.

ATIS 126.5	TULSA APP CON 134.7	RIVERSIDE TOWER ★ 120.3 (CTAF) 0	GND CON 121.7	CLNC DEL 124.5	UNICOM 122.95
----------------------	-------------------------------	--	-------------------------	--------------------------	-------------------------



SC-1, 10 SEP 2020 to 08 OCT 2020

SC-1, 10 SEP 2020 to 08 OCT 2020

4 NM Holding Pattern					VGS1 and RNAV glidepath not coincident (VGS1 Angle 3.00/TCH 48).				
2800 ← 190°					→ 010°				
GP 3.00°					TCH 40				
6.1 NM					3 NM				
1.6 NM					1.2 NM				
ZEBEK 2500					JALIP 2500				
*1540					*1.2 NM to RW01L				
*NAV only.					RW01L				
1100					2600				
KEVIL									
CATEGORY	A	B	C	D					
LPV DA	826- ³ / ₄		200 (200- ³ / ₄)						
LNAV/VNAV DA	1126- ¹ / ₄		500 (500- ¹ / ₄)						
LNAV MDA	1060-1		434 (500-1)		1060- ¹ / ₄		434 (500- ¹ / ₄)		
CIRCLING	1260-1		1280-1		1280- ¹ / ₄		1380- ² / ₂		
	622 (700-1)		642 (700-1)		642 (700- ¹ / ₄)		742 (800- ² / ₂)		

