

APP CRS	Rwy Idg	<b>2855</b>
<b>230°</b>	TDZE	<b>142</b>
	Apt Elev	<b>150</b>

# RNAV (GPS) RWY 23

CAMDEN COUNTY (19N)

RNP APCH.

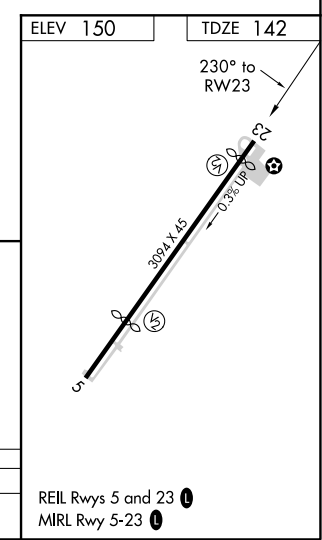
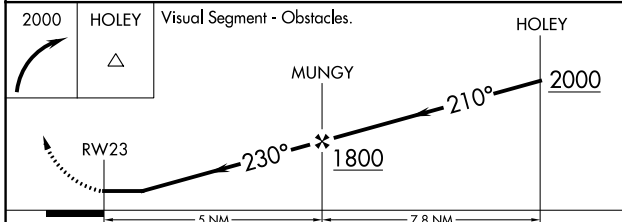
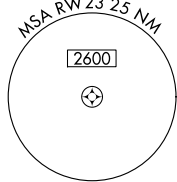
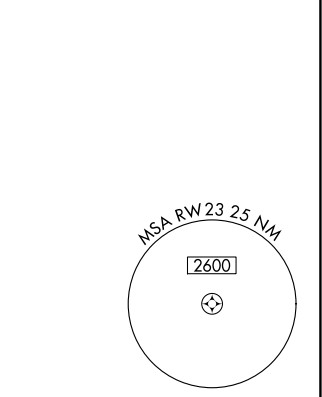
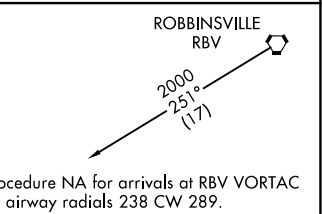
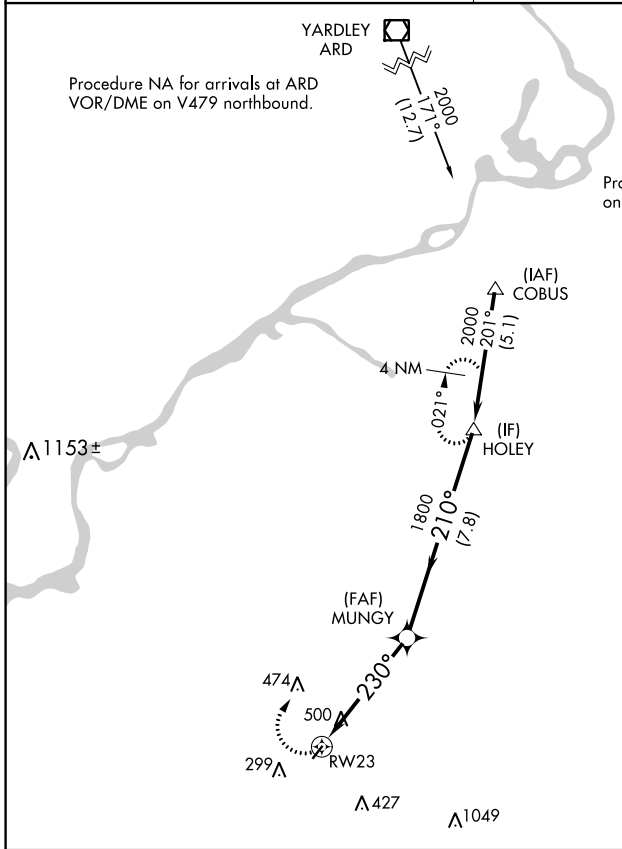
**▽** Rwy 23 helicopter visibility reduction below 1 SM NA. Use Mount Holly altimeter setting; if not received use Philadelphia Intl altimeter setting and increase all MDA 20 feet. Procedure NA at night.

**△** NA

MISSED APPROACH: Climbing right turn to 2000 direct HOLEY and hold.

MC GUIRE APP CON  
**126.475 363.8**

UNICOM  
**123.0 (CTAF) 1**



CATEGORY	A	B	C	D
LNAV MDA	840-1	698 (700-1)	NA	

REIL Rwy 5 and 23 **1**  
MIRL Rwy 5-23 **1**

NE-2, 10 SEP 2020 to 08 OCT 2020

NE-2, 10 SEP 2020 to 08 OCT 2020