

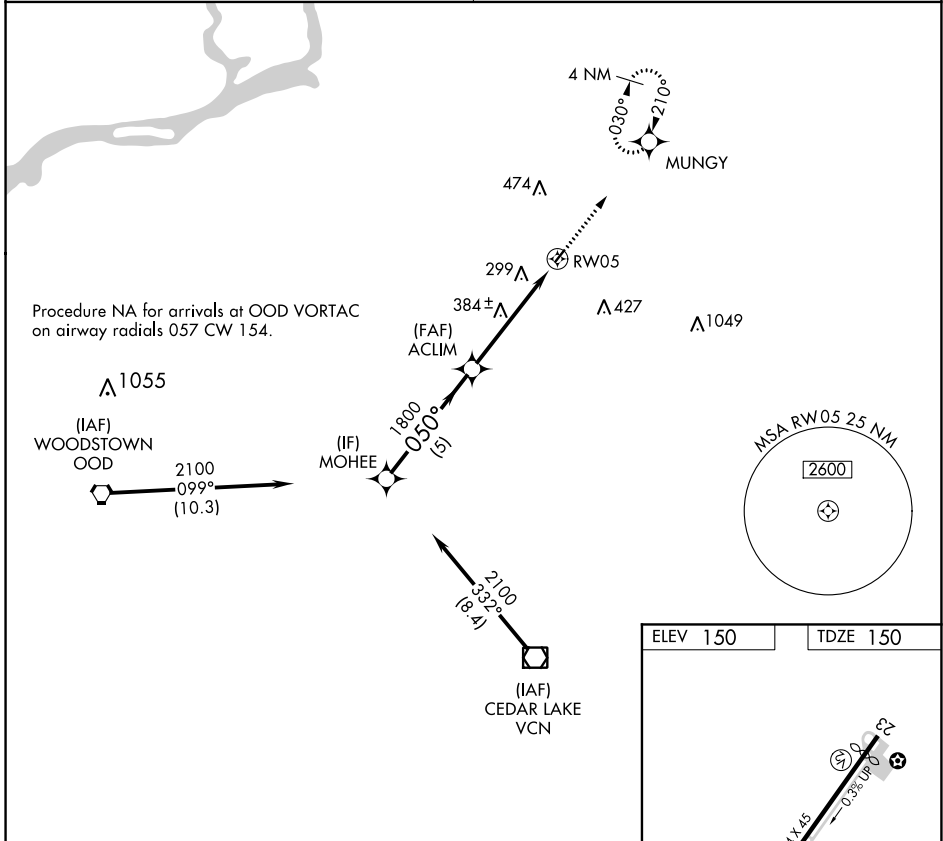
APP CRS	Rwy Idg	<b>2354</b>
<b>050°</b>	TDZE	<b>150</b>
	Apt Elev	<b>150</b>

# RNAV (GPS) RWY 5

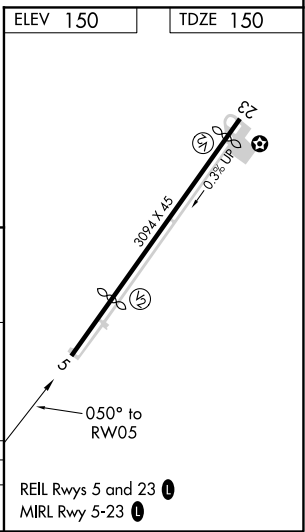
CAMDEN COUNTY (19N)

RNP APCH.	MISSED APPROACH: Climb to 2000 direct MUNGY and hold.
<p>▼ Rwy 5 helicopter visibility reduction below 1 SM NA.</p> <p>▲ NA Procedure NA at night. Use Mount Holly altimeter setting; when not received use Philadelphia Intl altimeter setting and increase all MDA 20 feet.</p>	

MC GUIRE APP CON <b>126.475 363.8</b>	UNICOM <b>123.0 (CTAF)</b>
--	-------------------------------



MOHEE	Visual Segment - Obstacles.	2000	MUNGY
2100	050°	1800	
	5 NM	5 NM	
CATEGORY	A	B	C
LNAV MDA	740-1	590 (600-1)	NA



NE-2, 10 SEP 2020 to 08 OCT 2020

NE-2, 10 SEP 2020 to 08 OCT 2020