

LOC/DME I-GVL 110.55 Chan 42 (Y)	APP CRS 044°	Rwy Idg 5496 TDZE 1275 Apt Elev 1277
---	------------------------	---

ILS or LOC RWY 5

LEE GILMER MEMORIAL (GVL)

ADF or DME required for procedure entry.
ADF required.



MISSED APPROACH:
Climb to 2000 then
climbing left turn to 3100
direct FKV NDB and hold.

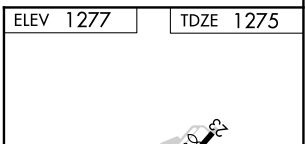
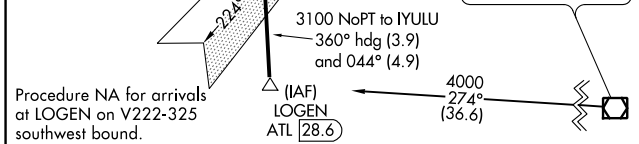
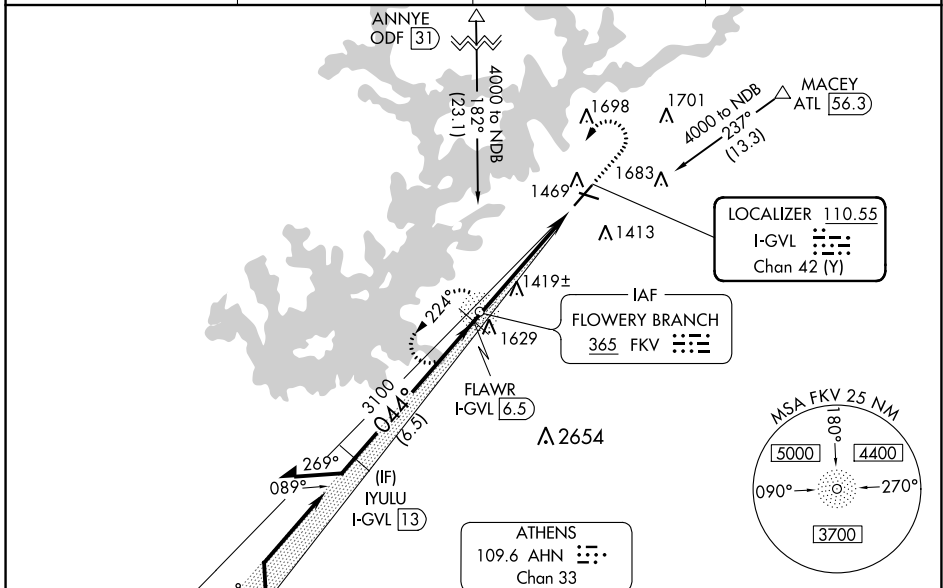
◀ Circling Rwy 11, 29 NA at night. Rwy 5 helicopter visibility reduction below 3/4 SM NA.
▼ VDP NA when using Jefferson altimeter setting. When local altimeter setting not received,
▲ use Jefferson altimeter setting: increase all DA to 1556 feet and all visibilities 1/4 SM;
increase all MDA 80 feet and S-LOC 5 Cat D visibility and Circling Cats C/D visibility 1/4 SM.

ASOS
126.475

ATLANTA APP CON★
132.475 291.1

GCO
121.725

UNICOM
123.075 (CTAF)



CATEGORY	A	B	C	D
S-ILS 5		1475-3/4	200 (200-3/4)	
S-LOC 5	1680-1	405 (500-1)	1680-1/4	405 (500-1/4)
CIRCLING	1880-1	603 (700-1)	1880-1 3/4	2060-2 1/2
			603 (700-1 3/4)	783 (800-2 1/2)

Knots	60	90	120	150	180
Min:Sec	5:30	3:40	2:45	2:12	1:50

FAF to MAP 5.5 NM
HIRL Rwy 5-23

SE-4, 10 SEP 2020 to 08 OCT 2020

SE-4, 10 SEP 2020 to 08 OCT 2020