

WAAS CH 42605 W05A	APP CRS 044°	Rwy Idg TDZE Apt Elev	5496 1275 1277
---------------------------------	------------------------	-----------------------------	---

RNAV (GPS) RWY 5

LEE GILMER MEMORIAL (GVL)

RNP APCH.

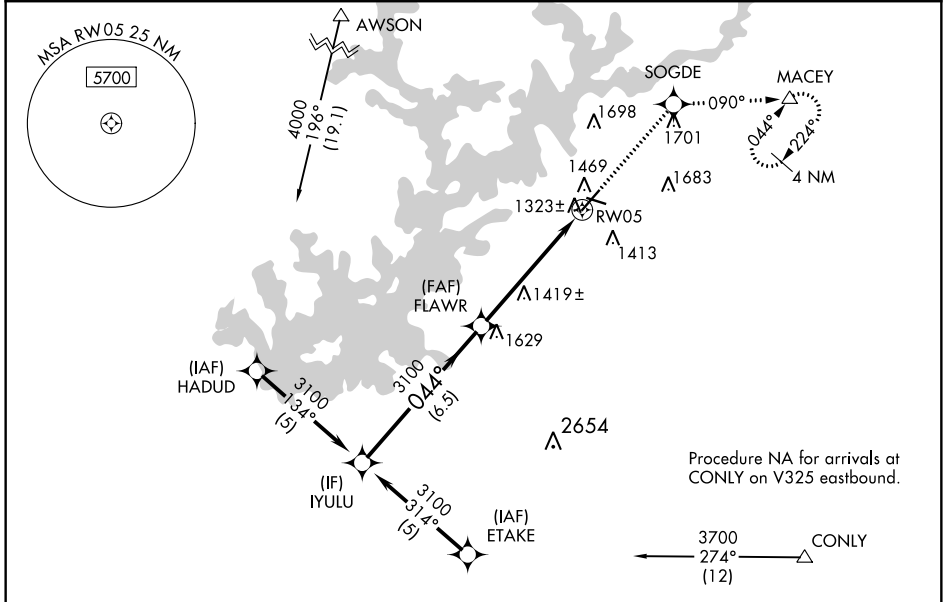
For uncompensated Baro-VNAV systems, LNAV/VNAV NA below -17°C or above 46°C. When local altimeter setting not received, use Jefferson altimeter setting: increase all DA/MDA 80 feet; increase LPV and LNAV/VNAV all Cats visibilities ¼ SM, LNAV Cat D and Circling Cat C/D visibility ¼ SM. Baro-VNAV and VDP NA when using Jefferson altimeter setting. Circling Rwy 11, 29 NA at night.

MALSR

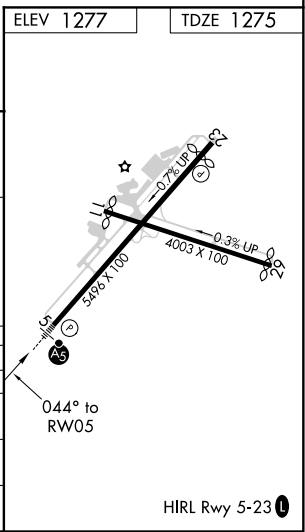
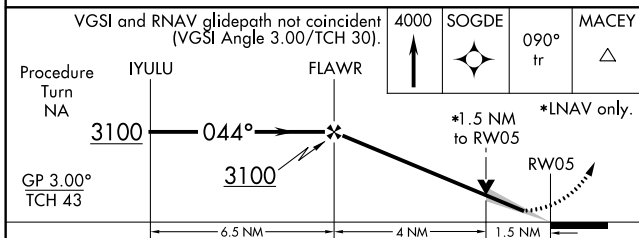


MISSED APPROACH: Climb to 4000 direct SOGDE and on 090° track to MACEY and hold, continue climb-in-hold to 4000.

ASOS 126.475	ATLANTA APP CON * 132.475 291.1	GCO 121.725	UNICOM 123.075 (CTAF)
------------------------	---	-----------------------	---------------------------------



ELEV 1277	TDZE 1275
-----------	-----------



CATEGORY	A	B	C	D
LPV DA		1525-1	250 (300-1)	
LNAV/VNAV DA		1760-1¾	485 (500-1¾)	
LNAV MDA	1780-1	505 (600-1)	1780-1½	505 (600-1½)
CIRCLING	1880-1	603 (700-1)	1880-1¾ 603 (700-1¾)	2060-2½ 783 (800-2½)

SE-4, 10 SEP 2020 to 08 OCT 2020

SE-4, 10 SEP 2020 to 08 OCT 2020