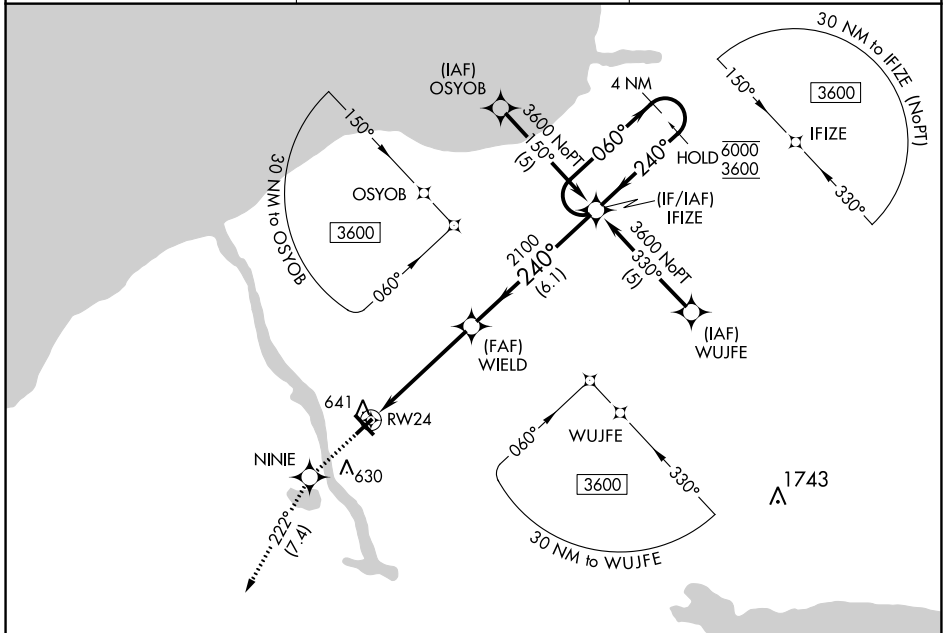


APP CRS 240°	Rwy Idg TDZE Apt Elev	3997 469 475
------------------------	-----------------------------	---

RNAV (GPS) RWY 24

OSWEGO COUNTY (FZY)

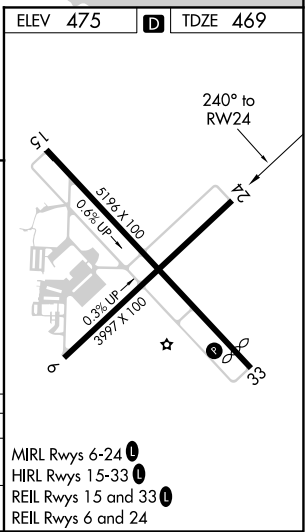
RNP APCH.		MISSED APPROACH: Climb to 3000 direct NINIE and on track 222° to LYSAN and hold.
<p>▼ Rwy 24 helicopter visibility reduction below 1 SM NA.</p>		
ASOS 119.275	SYRACUSE APP CON 126.125 269.125	UNICOM 123.0 (CTAF) 0



NE-2, 10 SEP 2020 to 08 OCT 2020

NE-2, 10 SEP 2020 to 08 OCT 2020

ELEV 475	TDZE 469			
3000	NINIE	LYSAN		
↑	tr 222°	△		
<p>WIELD</p> <p>IFIZE</p> <p>4 NM Holding Pattern</p> <p>060° → 6000</p> <p>← 240° 3600</p> <p>RWY 24</p> <p>3.04° TCH 40</p> <p>2100</p> <p>4.9 NM</p> <p>6.1 NM</p>				
CATEGORY	A	B	C	D
LNVA MDA	960-1	491 (500-1)	960-1½ 491 (500-1½)	960-1½ 491 (500-1½)
CIRCLING	1000-1	525 (600-1)	1000-1½ 525 (600-1½)	1040-2 565 (600-2)



- MIRL Rwy 6-24 0
- HIRL Rwy 15-33 0
- REIL Rwy 15 and 33 0
- REIL Rwy 6 and 24