

APP CRS <b>011°</b>	Rwy Idg <b>3496</b> TDZE <b>49</b> Apt Elev <b>49</b>
------------------------	---

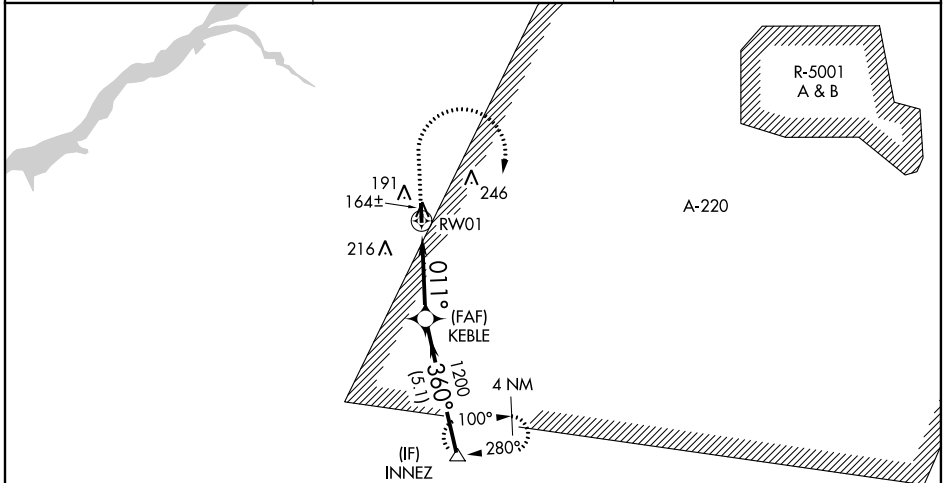
# RNAV (GPS) RWY 1

FLYING W (N14)

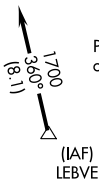
**▼** Use Mount Holly altimeter setting; when not received, use Northeast Philadelphia altimeter setting and increase all MDA 40 feet. DME/DME RNP-0.3 NA. Straight-in Rwy 1 NA at night, Circling Rwy 1 NA at night. Rwy 1 helicopter visibility reduction below 1 SM NA.

**MISSED APPROACH:** Climb to 500 then climbing right turn to 2000 direct INNEZ and hold.

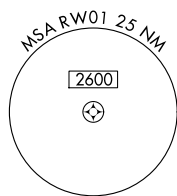
VAY ASOS <b>119.325</b>	MC GUIRE APP CON <b>126.475 363.8</b>	UNICOM <b>122.8 (CTAF) 0</b>
----------------------------	--	---------------------------------



1049  $\Delta$



Procedure NA for arrivals on V16 southwest bound.



ELEV 49	TDZE 49
---------	---------

MIRL Rwy 1-19 **1**  
REL Rws 1 and 19 **1**

011° to RW01

500	2000	INNEZ	VGSI and descent angles not coincident (VGSI Angle 3.50/TCH 26).	INNEZ
		$\Delta$		
RW01		KEBLE	1200	1700
3.5 NM		5.1 NM		
CATEGORY	A	B	C	D
RNAV MDA	420-1	371 (400-1)	NA	
CIRCLING	520-1	471 (500-1)	NA	

NE-2, 10 SEP 2020 to 08 OCT 2020

NE-2, 10 SEP 2020 to 08 OCT 2020