

WAAS CH <b>77828</b> <b>W19A</b>	APP CRS <b>191°</b>	Rwy Idg <b>3496</b> TDZE <b>49</b> Apt Elev <b>49</b>
--	------------------------	---

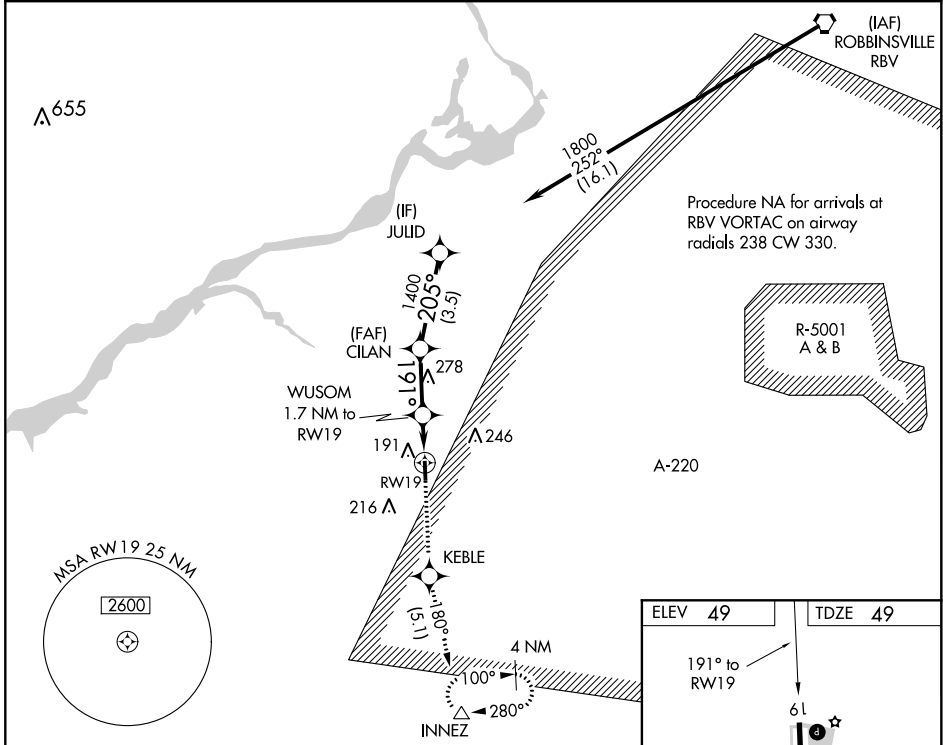
# RNAV (GPS) RWY 19

FLYING W (N14)

**▽** Baro-VNAV NA when using Northeast Philadelphia altimeter setting. For uncompensated Baro-VNAV systems, LNAV/VNAV NA below -15°C (5°F) or above 54°C (130°F).  
**△** NA DME/DME RNP-0.3 NA. VDP NA with Northeast Philadelphia altimeter setting. Use Mount Holly altimeter setting, when not received use Northeast Philadelphia altimeter setting and increase all DA/MDA 40 feet and increase LPV and LNAV/VNAV all Cats visibility 1/8 mile. Circling Rwy 1 NA at night. Rwy 1 helicopter visibility reduction below 1 SM NA. Rwy 19 helicopter visibility reduction below 3/4 SM NA.

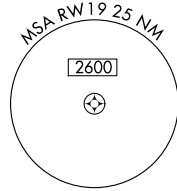
**MISSED APPROACH:**  
Climb to 2000 direct KEBLE and on track 180° to INNEZ and hold.

VAY ASOS <b>119.325</b>	MC GUIRE APP CON <b>126.475 363.8</b>	UNICOM <b>122.8 (CTAF)</b>
----------------------------	--	-------------------------------

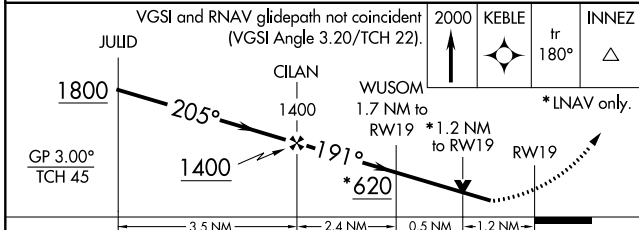


NE-2, 10 SEP 2020 to 08 OCT 2020

NE-2, 10 SEP 2020 to 08 OCT 2020



ELEV 49	TDZE 49
---------	---------



CATEGORY	A	B	C	D
LPV DA	415-1 1/4	366 (400-1 1/4)		NA
LNAV/VNAV DA	353-1	304 (400-1)		NA
LNAV MDA	460-1	411 (500-1)		NA
CIRCLING	520-1	471 (500-1)		NA

MIRL Rwy 1-19 **Ⓛ**  
REIL Rwy 1 and 19 **Ⓛ**