

WESTMINSTER, MARYLAND

AL-5533 (FAA)

19115

WAAS CH <b>82117</b> <b>W34A</b>	APP CRS <b>339°</b>	Rwy Idg <b>5100</b> TDZE <b>788</b> Apt Elev <b>789</b>
--	------------------------	---

# RNAV (GPS) RWY 34

CARROLL COUNTY RGNL/JACK B POAGE FIELD (DMW)

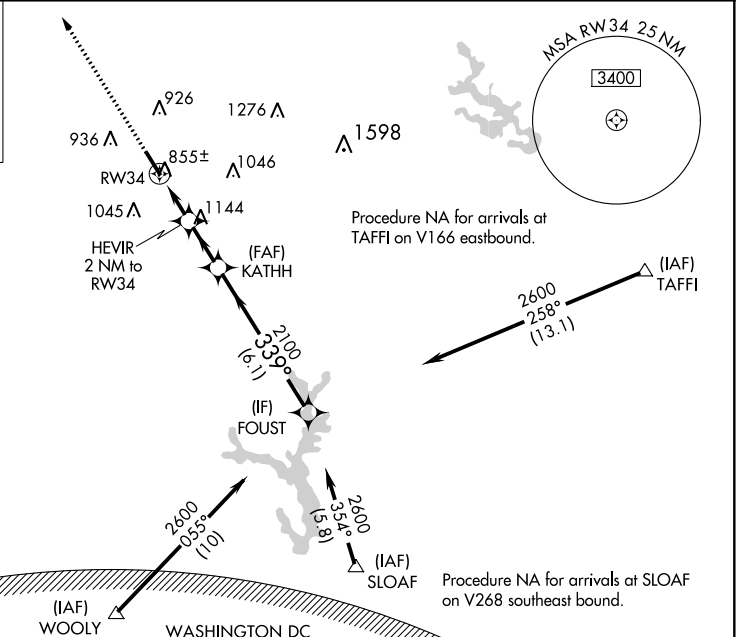
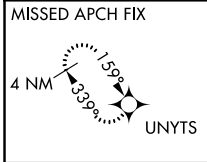
RNP APCH

**▼** For uncompensated Baro-VNAV systems, LNAV/VNAV NA below -16°C (4°F) or above 54°C (130°F).

**▲**

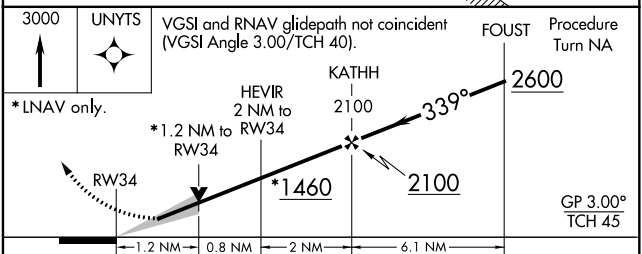
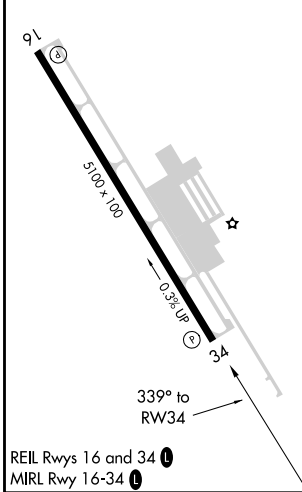
MISSED APPROACH: Climb to 3000 direct UNYTS and hold

AWOS-3 <b>121.25</b>	POTOMAC APP CON <b>125.525 291.625</b>	GCO <b>121.725</b>	UNICOM <b>122.7 (CTAF) 0</b>
-------------------------	---	-----------------------	---------------------------------



ELEV 789 TDZE 788

WARNING -- WASHINGTON DC SFRA.  
CTC POTOMAC APP CON



CATEGORY	A	B	C	D
LPV DA	988-1	200 (200-1)		NA
LNAV/VNAV DA	1105-1½	317 (400-1½)		NA
LNAV MDA	1180-1	392 (400-1)		NA
CIRCLING	1320-1	531 (600-1)		NA

WESTMINSTER, MARYLAND  
Amdt 1b 21JUN18

CARROLL COUNTY RGNL/JACK B POAGE FIELD (DMW)  
39°36'N-77°00'W

# RNAV (GPS) RWY 34

NE-3, 10 SEP 2020 to 08 OCT 2020

NE-3, 10 SEP 2020 to 08 OCT 2020