

WESTMINSTER, MARYLAND

AL-5533 (FAA)

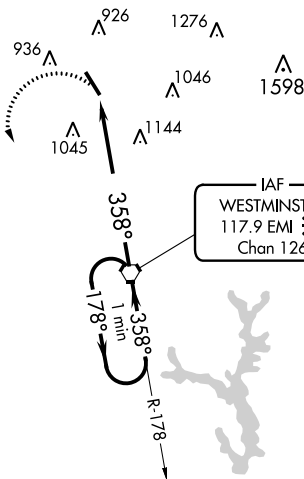
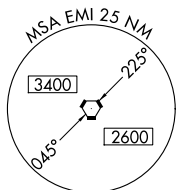
19115

VORTAC EMI 117.9 Chan 126	APP CRS 358°	Rwy Idg TDZE Apt Elev	5100 788 789
---	------------------------	-----------------------------	---

VOR RWY 34

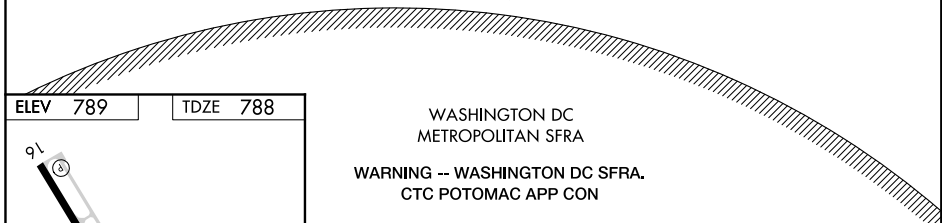
CARROLL COUNTY RGNL/JACK B POAGE FIELD (DMW)

NA		MISSED APPROACH: Climbing left turn to 2900 direct EMI VORTAC and hold.	
AWOS-3 121.25	POTOMAC APP CON 125.525 291.625	GCO 121.725	UNICOM 122.7 (CTAF) 0

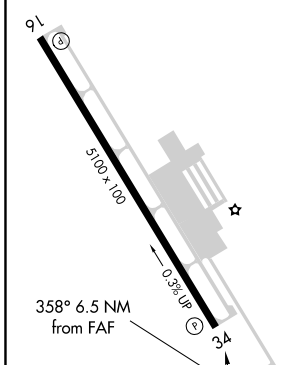


NE-3, 10 SEP 2020 to 08 OCT 2020

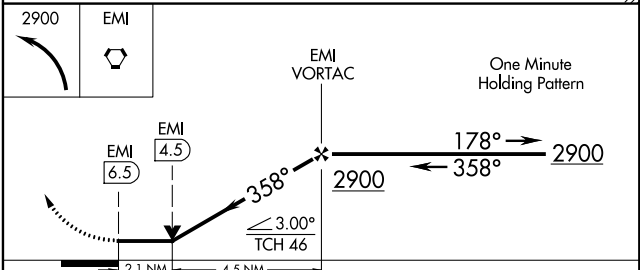
NE-3, 10 SEP 2020 to 08 OCT 2020



ELEV 789	TDZE 788
-----------------	-----------------



FAF to MAP 6.5 NM					
Knots	60	90	120	150	180
Min:Sec	6:30	4:20	3:15	2:36	2:10



CATEGORY	A	B	C	D
S-34	1480-1	692 (700-1)	1480-2 692 (700-2)	NA
CIRCLING	1480-1	691 (700-1)	1480-2 691 (700-2)	NA

WESTMINSTER, MARYLAND
Amdt 4B 31AUG06

CARROLL COUNTY RGNL/JACK B POAGE FIELD (DMW)
39°36'N-77°00'W

VOR RWY 34