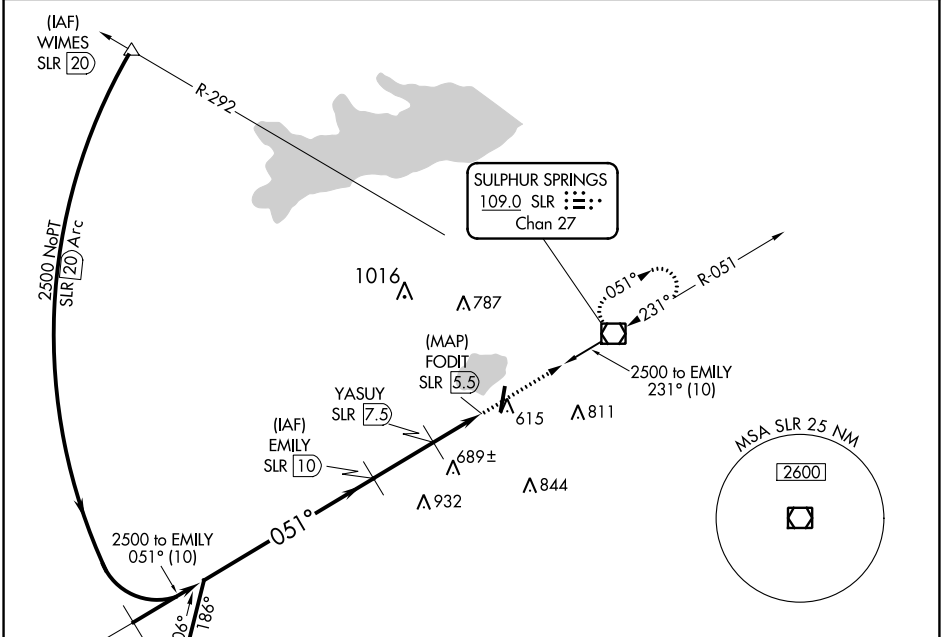


VOR/DME SLR <b>109.0</b> Chan <b>27</b>	APP CRS <b>051°</b>	Rwy Idg TDZE Apt Elev	<b>N/A</b> <b>N/A</b> <b>489</b>
---	------------------------	-----------------------------	--

**VOR-B**  
SULPHUR SPRINGS MUNI (SLR)

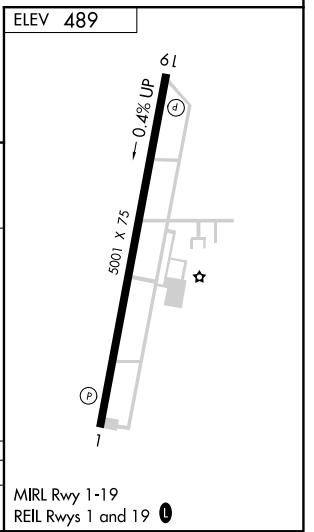
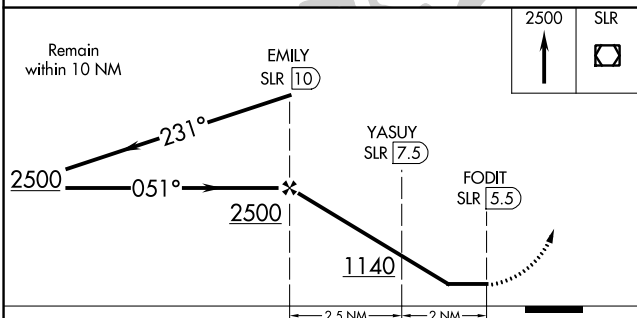
DME required.	MISSED APPROACH: Climb to 2500 direct SLR VOR/DME and hold.
Circling NA east of Rwy 1-19.	

AWOS-3 <b>118.35</b>	FORT WORTH CENTER <b>132.025 360.75</b>	UNICOM <b>123.075</b> (CTAF)
-------------------------	--	---------------------------------



SC-2, 10 SEP 2020 to 08 OCT 2020

SC-2, 10 SEP 2020 to 08 OCT 2020



CATEGORY	A	B	C	D
CIRCLING	940-1	451 (500-1)	1000-1½ 511 (600-1½)	NA