

LOC I-GVQ 108.9	APP CRS 282°	Rwy Idg TDZE Apt Elev	5499 911 913
---------------------------	------------------------	-----------------------------	---

ILS or LOC RWY 28

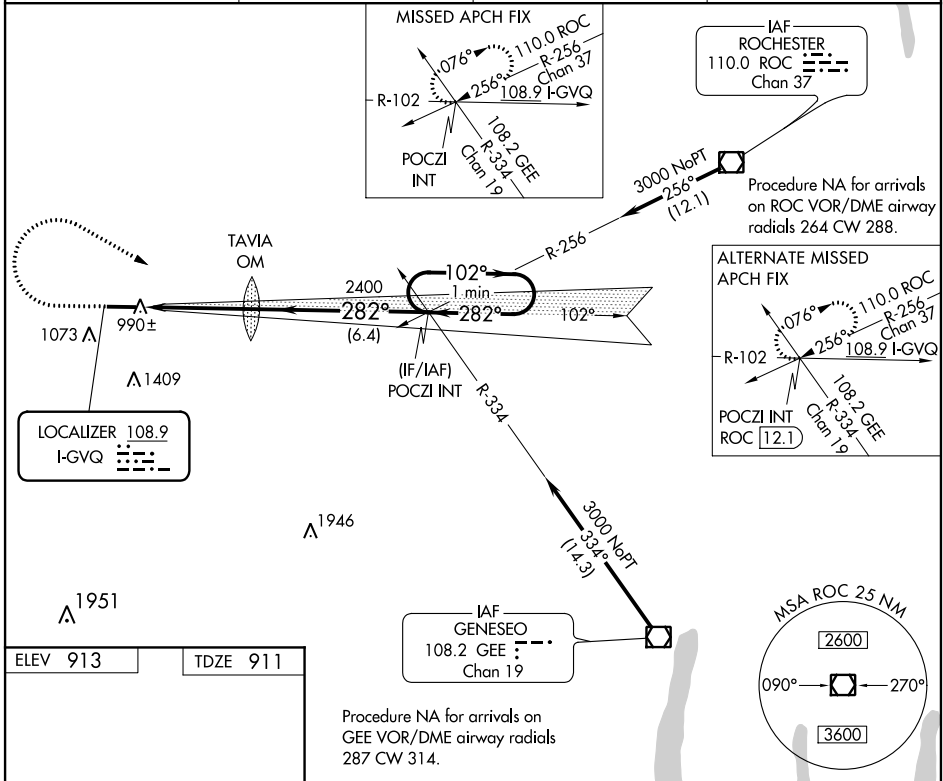
GENESEE COUNTY (GVQ)

NA When local altimeter setting not received, use Rochester altimeter setting and increase all DA 102 feet and all MDA 120 feet; increase S-LOC 28 Cats C/D and Circling Cat D visibility ¼ mile. Autopilot coupled approach NA below 1433.

MALSR

MISSED APPROACH: Climb to 1500 then climbing right turn to 3000 via heading 130° and I-GVQ east course to POCZI INT and hold.

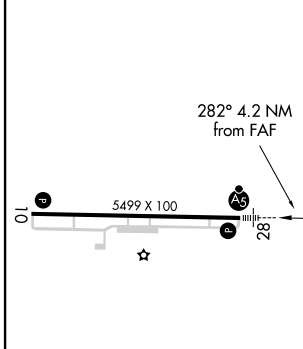
AWOS-3PT 127.525	ROCHESTER APP CON 123.7 322.3	CLNC DEL 121.8	UNICOM 122.7 (CTAF)
----------------------------	---	--------------------------	-------------------------------



NE-2, 10 SEP 2020 to 08 OCT 2020

NE-2, 10 SEP 2020 to 08 OCT 2020

ELEV 913	TDZE 911
----------	----------



REIL Rwy 10	HIRL Rwy 10-28	FAF to MAP 4.2 NM			
Knots	60	90	120	150	180
Min:Sec	4:12	2:48	2:06	1:41	1:24
CATEGORY	A	B	C	D	
S-ILS 28	1111-½ 200 (200-½)				
S-LOC 28	1260-½ 349 (400-½)			1260-¾ 349 (400-¾)	
CIRCLING	1380-1 467 (500-1)		1380-1½ 467 (500-1½)		1480-2 567 (600-2)