

WAAS CH <b>86311</b> <b>W28A</b>	APP CRS <b>282°</b>	Rwy Idg TDZE <b>911</b> Apt Elev <b>913</b>	<b>5499</b>
--	------------------------	---	-------------

# RNAV (GPS) RWY 28

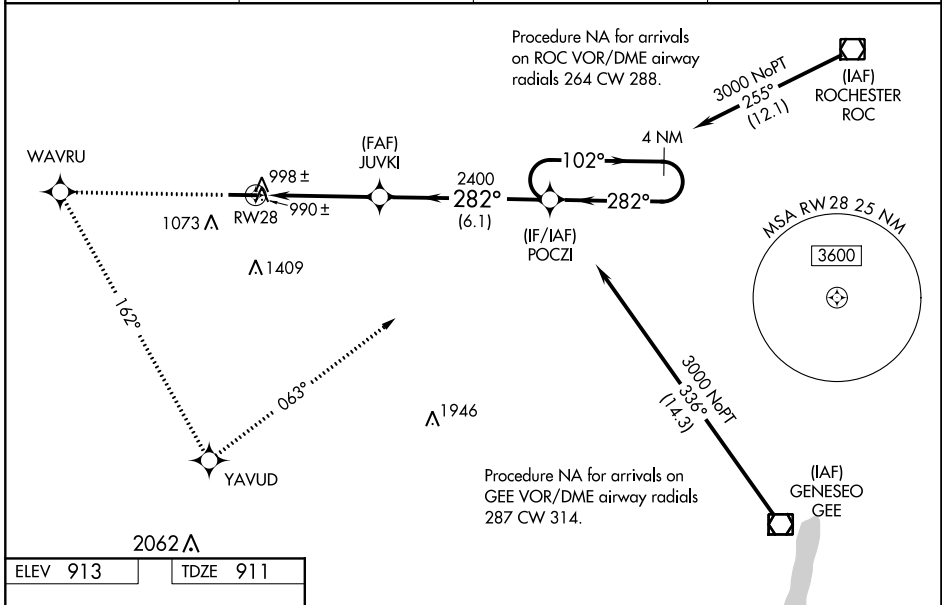
GENESEE COUNTY (GVQ)

**NA** For uncompensated Baro-VNAV systems, LNAV/VNAV NA below -16°C (4°F) or above 46°C (114°F). DME/DME RNP-0.3 NA. When local altimeter setting not received, use Rochester altimeter setting and increase all DA 102 feet and all MDA 120 feet; increase LPV all Cats visibility 1/4 mile, LNAV/VNAV all Cats visibility 1/2 mile, LNAV Cat C and Circling Cat D visibility 1/4 mile. Baro-VNAV and VDP NA when using Rochester altimeter setting. For inoperative MALSR increase LNAV Cat D visibility to 1/4 mile. For inoperative MALSR, when using Rochester altimeter setting increase LPV visibility all Cats to 1/4 mile.



**MISSED APPROACH:** Climb to 3300 direct WAVRU and left turn via 162° track to YAVUD and left turn via 063° track to POCZI and hold.

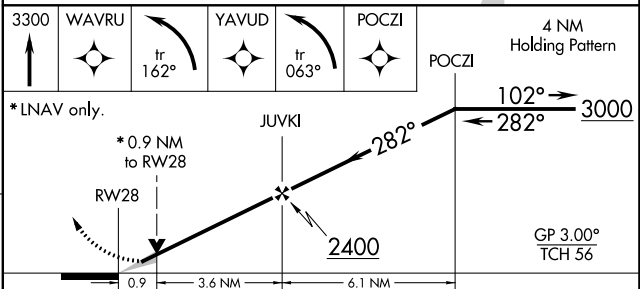
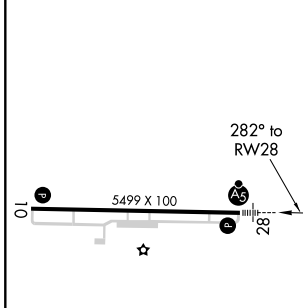
AWOS-3PT <b>127.525</b>	ROCHESTER APP CON <b>123.7 322.3</b>	CLNC DEL <b>121.8</b>	UNICOM <b>122.7 (CTAF)</b>
----------------------------	---	--------------------------	-------------------------------



NE-2, 10 SEP 2020 to 08 OCT 2020

NE-2, 10 SEP 2020 to 08 OCT 2020

ELEV 913	TDZE 911
----------	----------



CATEGORY	A	B	C	D
LPV DA		1161-1/2	250 (300-1/2)	
LNAV/VNAV DA		1364-1	453 (500-1)	
LNAV MDA		1260-1/2	349 (400-1/2)	1260-1 349 (400-1)
CIRCLING	1380-1	467 (500-1)	1380-1 1/2 467 (500-1 1/2)	1480-2 567 (600-2)

REIL Rwy 10 **1**  
HIRL Rwy 10-28 **1**