

WAAS CH <b>90208</b> <b>W18A</b>	APP CRS <b>181°</b>	Rwy ldg <b>4997</b> TDZE <b>1191</b> Apt Elev <b>1191</b>
--	------------------------	---

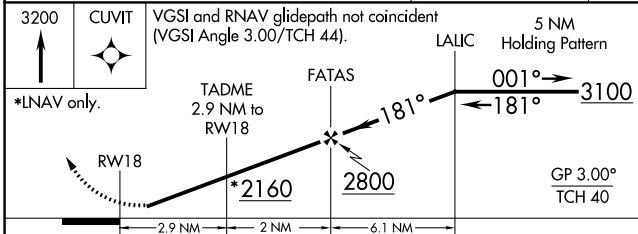
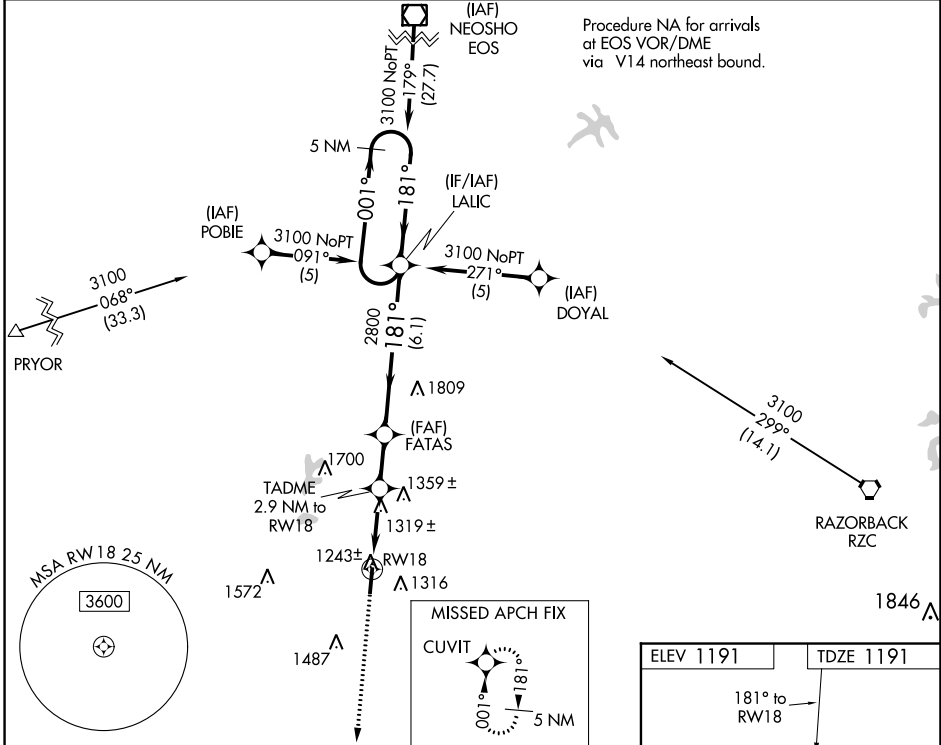
# RNAV (GPS) RWY 18

SMITH FIELD (SLG)

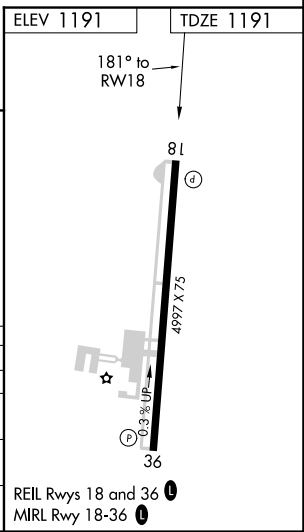
**Baro-VNAV NA** when using Northwest Arkansas Rgnl altimeter setting. For uncompensated Baro-VNAV systems, LNAV/VNAV NA below -17°C (2°F) or above 46°C (114°F). DME/DME RNP-0.3 NA. Visibility reduction by helicopters NA. When local altimeter setting not received, use Northwest Arkansas Rgnl altimeter setting, and increase all DA/MDA 40 feet, and increase LPV visibility ¼ mile all Cats, LNAV/VNAV visibility ½ mile all Cats, and LNAV visibility Cat C and D ¼ mile.

**MISSED APPROACH:**  
Climb to 3200 direct CUVIT and hold.

AWOS-3PT <b>118.375</b>	RAZORBACK APP CON * <b>121.0 244.575</b>	UNICOM <b>122.8 (CTAF) ①</b>
----------------------------	---	---------------------------------



CATEGORY	A	B	C	D
LPV DA		1479-1	288 (300-1)	
LNAV/VNAV DA		1623-1½	432 (500-1½)	
LNAV MDA	1580-1	389 (400-1)		1580-1¼ 389 (400-1¼)
CIRCLING	1620-1 429 (500-1)	1720-1 529 (600-1)	1720-1½ 529 (600-1½)	1760-2 569 (600-2)



SC-1, 10 SEP 2020 to 08 OCT 2020

SC-1, 10 SEP 2020 to 08 OCT 2020