

WAAS CH 86242 W31A	APP CRS 315°	Rwy Idg TDZE Apt Elev	5500 888 889
----------------------------------------	------------------------	-----------------------------	-----------------------------------------

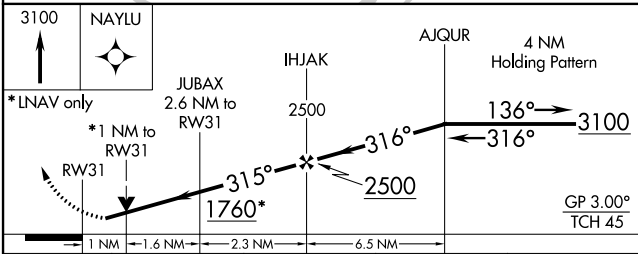
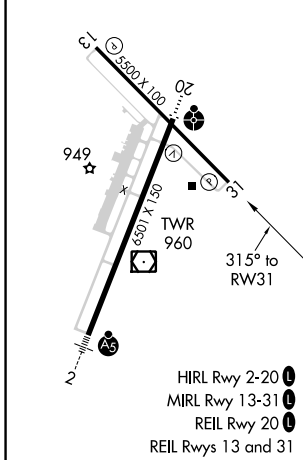
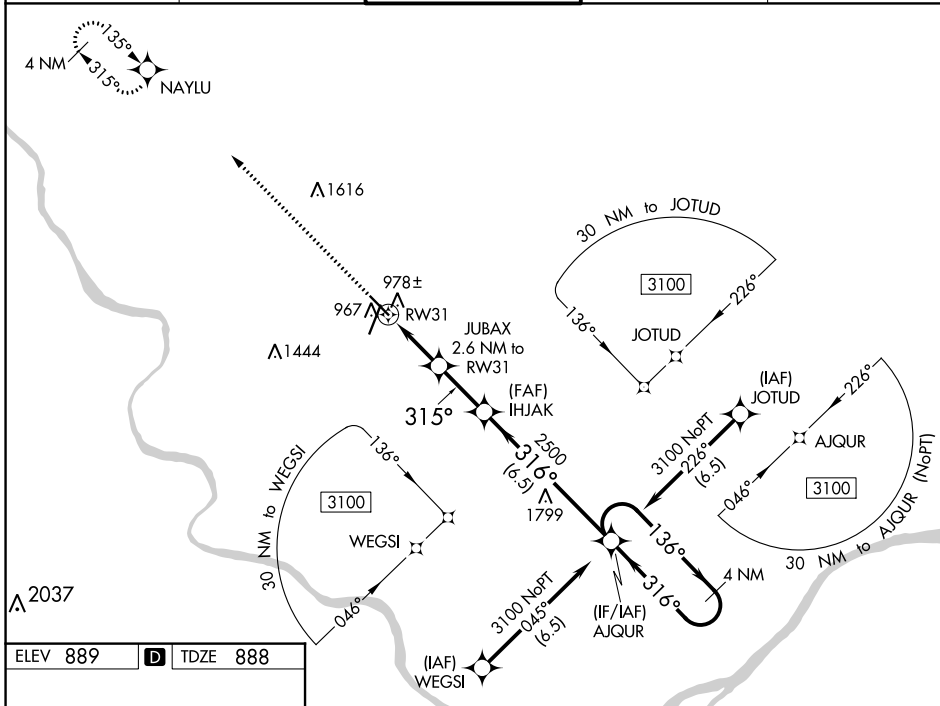
RNAV (GPS) RWY 31

COLUMBIA RGNL (COU)

▽ For uncompensated Baro-VNAV systems, LNAV/VNAV NA below -17°C (2°F) or above 54°C (130°F). Circling NA for Cat D west of Rws 2 and 13.
Rwy 31 helicopter visibility reduction below ¾ SM NA. DME/DME RNP-0.3 NA.

MISSED APPROACH: Climb to 3100 direct NAYLU and hold.

ATIS 128.45	MIZZU APP CON 124.375 353.7	COLUMBIA TOWER * 119.3 (CTAF) 363.25	GND CON 121.9	UNICOM 122.95
-----------------------	---------------------------------------	-------------------------------------------------------	-------------------------	-------------------------



CATEGORY	A	B	C	D
LPV DA		1138-1	250 (300-1)	
LNAV/VNAV DA		1138-1	250 (300-1)	
LNAV MDA		1240-1	352 (400-1)	
CIRCLING	1300-1 411 (500-1)	1340-1 451 (500-1)	1340-1½ 451 (500-1½)	1440-2 551 (600-2)

NC-3, 10 SEP 2020 to 08 OCT 2020

NC-3, 10 SEP 2020 to 08 OCT 2020