

VOR/DME COU 110.2 Chan 39	APP CRS 196°	Rwy Idg TDZE 889 Apt Elev 889
---	------------------------	---

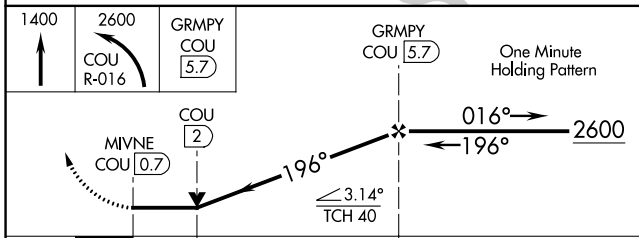
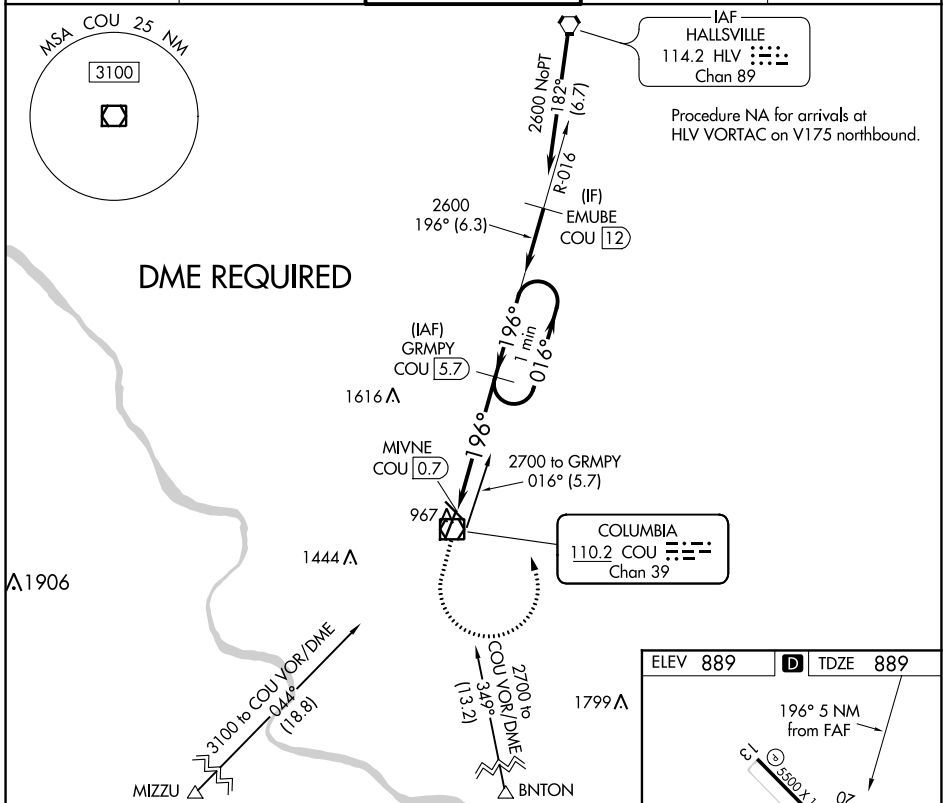
VOR Y RWY 20

COLUMBIA RGNL (COU)

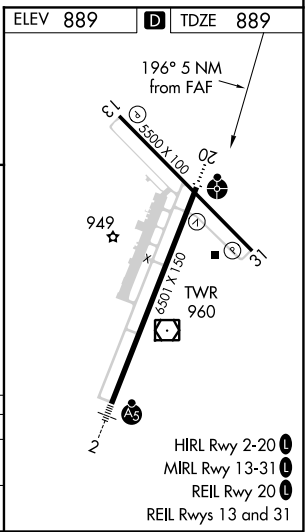
▼ Circling NA for Cat D west of Rws 2 and 13. DME required.

ODALS
MISSED APPROACH: Climb to 1400 then climbing left turn to 2600 on COU VOR/DME R-016 to GRMPY/COU 5.7 DME and hold.

ATIS 128.45	MIZZU APP CON 124.375 353.7	COLUMBIA TOWER * 119.3 (CTAF) 363.25	GND CON 121.9	UNICOM 122.95
-----------------------	---------------------------------------	---	-------------------------	-------------------------



CATEGORY	A	B	C	D
S-20	1360-3/4 471 (500-3/4)		1360-1 1/4 471 (500-1 1/4)	
C CIRCLING	1360-1 471 (500-1)		1360-1 1/2 471 (500-1 1/2)	1440-2 551 (600-2)



NC-3, 10 SEP 2020 to 08 OCT 2020

NC-3, 10 SEP 2020 to 08 OCT 2020