

LOC/DME I-PSG <b>110.5</b> Chan <b>42</b>	APP CRS <b>164°</b>	Rwy ldg TDZE Apt Elev <b>N/A</b> <b>N/A</b> <b>113</b>
---	------------------------	---

# LDA/DME-D

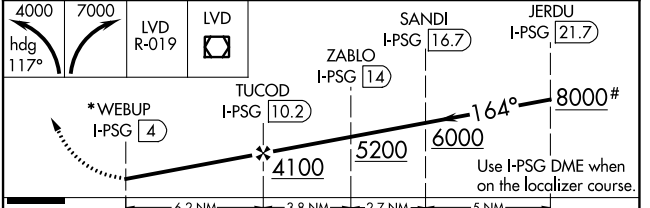
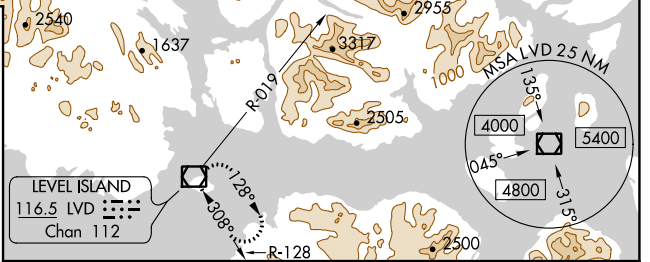
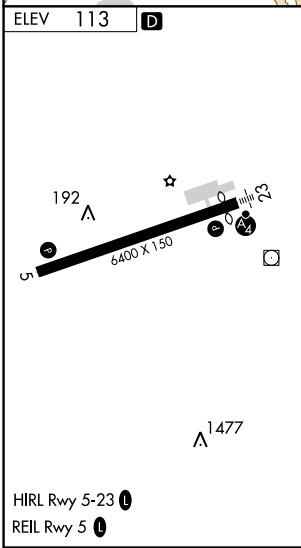
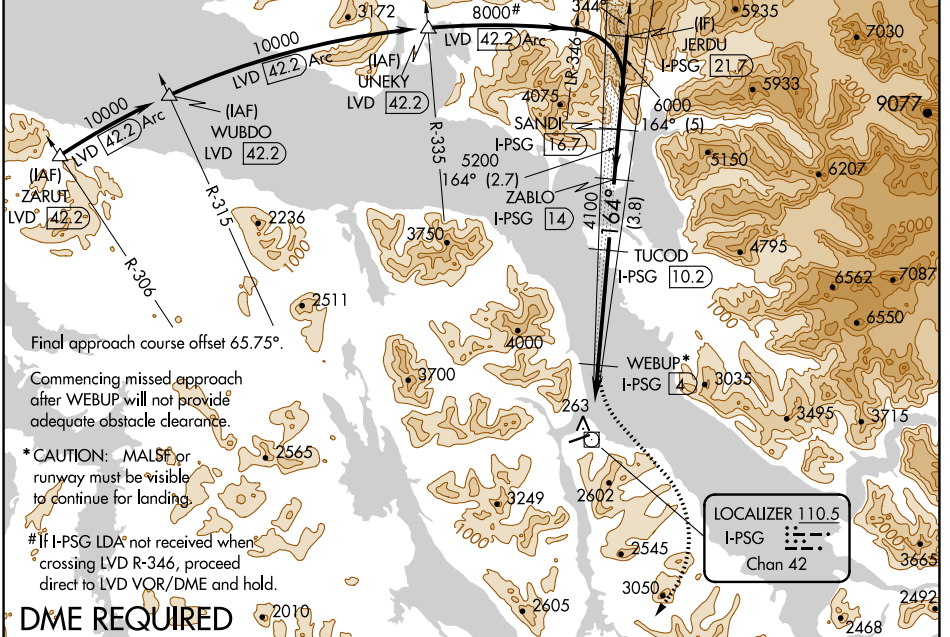
## PETERSBURG JAMES A JOHNSON (PSG) (PAPG)

**⚠** Circling to Rwy 5 NA at night. Inop table does not apply. Circling NA southeast of Rwy 5-23. When local altimeter setting not received, use Wrangell altimeter setting and increase all MDA 80 feet.

**⚠** -11°C

**MISSED APPROACH:** Climbing left turn to 4000 on heading 117° then climbing right turn to 7000 on LVD VOR/DME R-019 to LVD VOR/DME and hold, continue climb-in-hold to 7000.

AWOS-3P <b>125.8</b>	ANCHORAGE CENTER <b>118.0</b>	SITKA RADIO <b>122.35</b>	CTAF <b>122.50</b>
-------------------------	----------------------------------	------------------------------	-----------------------



CATEGORY	A	B	C	D
<b>C</b> CIRCLING	1800-5 1687 (1700-5)	1880-5 1767 (1800-5)	3080-5 2967 (3000-5)	NA

AK, 10 SEP 2020 to 05 NOV 2020

AK, 10 SEP 2020 to 05 NOV 2020