

APP CRS 166°	Rwy Idg TDZE Apt Elev	N/A N/A 113
------------------------	-----------------------------	--

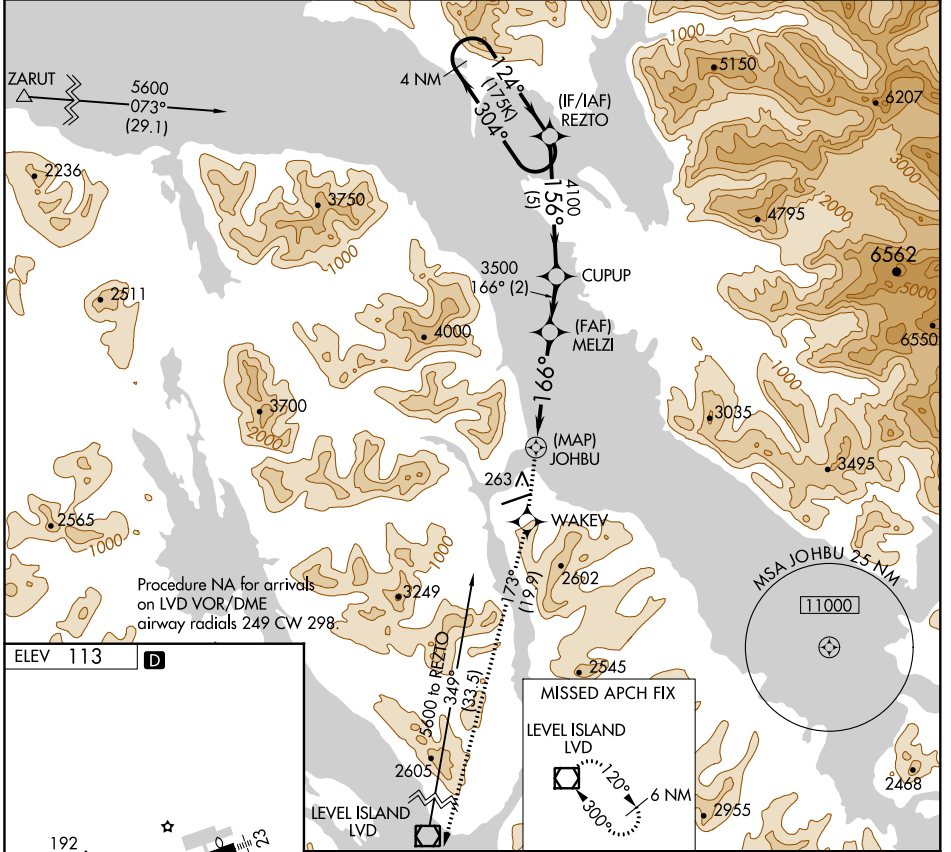
RNAV (GPS)-B

PETERSBURG JAMES A JOHNSON (PSG) (PAPG)

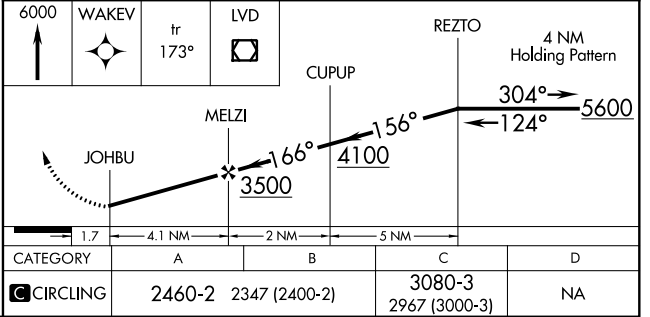
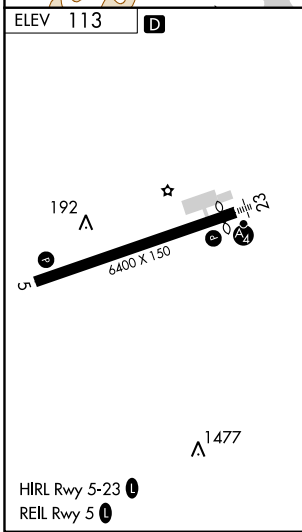
⚠ When local altimeter setting not received, use Wrangell altimeter setting and increase all MDA 80 feet. Circling **NA** southeast of Rwy 5-23. DME/DME RNP-0.3 NA.

MISSSED APPROACH: Climb to 6000 direct WAKEV and on track 173° to LVD VOR/DME and hold, continue climb-in-hold to 6000.

AWOS-3P 125.8	ANCHORAGE CENTER 118.0	SITKA RADIO 122.35	CTAF 122.5
-------------------------	----------------------------------	------------------------------	----------------------



Procedure NA for arrivals on LVD VOR/DME airway radials 249 CW 298.



AK, 10 SEP 2020 to 05 NOV 2020

AK, 10 SEP 2020 to 05 NOV 2020