

HI-ILS or LOC RWY 21

| | | |
|---|-------------------------|---|
| LOC/DME I-GTB 108.5 Chan 22 | APCH CRS 209° | Rwy Idg 10,000 TDZE 677 Arprt Elev 690 |
|---|-------------------------|---|

JAL-5754 [USA]

WHEELER-SACK AAF (KGTB)

▼ * When ALS inop, increase CAT CDE vis to 3/4 mile.
** When ALS inop, increase CAT C vis to 1 mile, CAT DE vis to 1 1/4 miles.

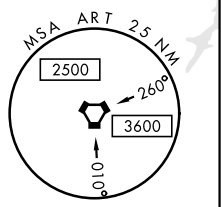
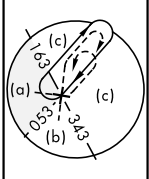
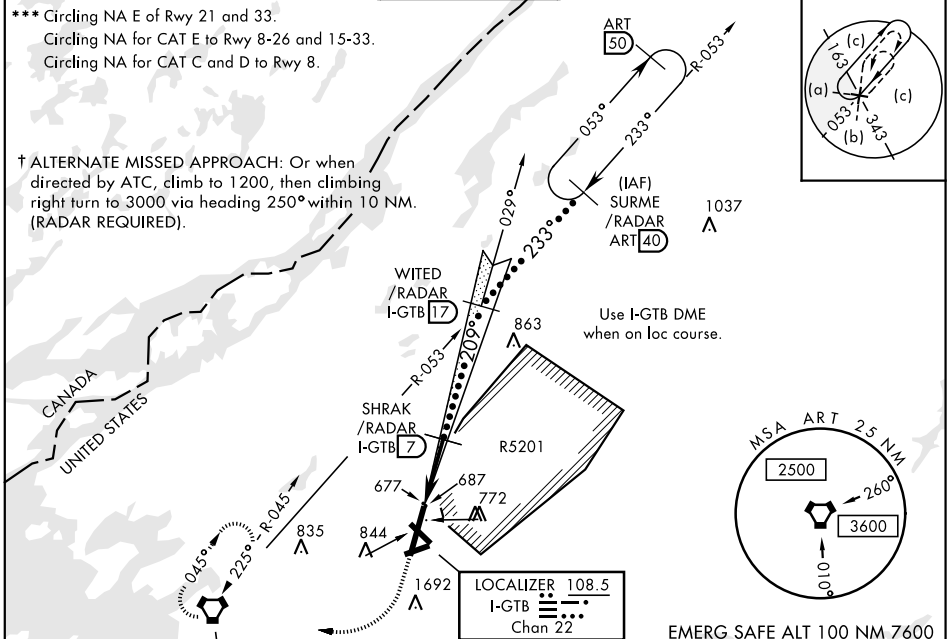


† MISSED APPROACH: Climb to 1200, then climbing right turn to 5000 direct ART VORTAC and hold. Continue climb in hold to 5000.

| | | | | | |
|------------------------|--|--|-------------------------------|--------------------------|---------|
| ATIS 119.525 | WHEELER-SACK APP CON 124.875 257.6 | WHEELER-SACK TOWER 118.75 290.25 | GND CON 121.9 229.8 | CLNC DEL 121.9 | ASR/PAR |
|------------------------|--|--|-------------------------------|--------------------------|---------|

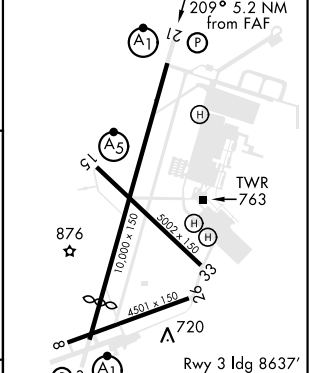
*** Circling NA E of Rwy 21 and 33.
Circling NA for CAT E to Rwy 8-26 and 15-33.
Circling NA for CAT C and D to Rwy 8.

† ALTERNATE MISSED APPROACH: Or when directed by ATC, climb to 1200, then climbing right turn to 3000 via heading 250° within 10 NM. (RADAR REQUIRED).

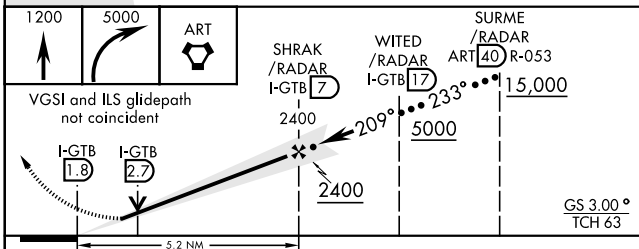


EMERG SAFE ALT 100 NM 7600

| | |
|----------|----------|
| ELEV 690 | TDZE 677 |
|----------|----------|



DME or RADAR REQUIRED



| CATEGORY | C | D | E |
|--------------|-----------------|-------------|-------------|
| S-ILS 21* | 877-1/2 | 200 | (200-1/2) |
| S-LOC 21** | 1020-3/4 | 343 | (300-3/4) |
| CIRCLING *** | 1180-1 1/2 | 1240-2 | 1520-3 |
| | 490 (500-1 1/2) | 550 (600-2) | 830 (900-3) |

| | | | | | |
|-------------------|------|------|------|------|------|
| FAF to MAP 5.2 NM | | | | | |
| Knots | 120 | 140 | 160 | 180 | 200 |
| Min:Sec | 2:36 | 2:14 | 1:57 | 1:44 | 1:34 |

HI-ILS or LOC RWY 21

NE-2, 10 SEP 2020 to 08 OCT 2020

NE-2, 10 SEP 2020 to 08 OCT 2020