

FORT DRUM, NEW YORK

ILS or LOC RWY 21

LOC/DME I-GTB 108.5 Chan 22	APCH CRS 209°	Rwy ldg 10,000 TDZE 677 Arprt Elev 690
---	-------------------------	---

AL-5754 [USA]

WHEELER-SACK AAF (KGTB)

▼ * When ALS inop, increase CAT ABCDE vis to ¾ mile.
 ** When ALS inop, increase CAT ABC vis to 1 mile, CAT DE vis to 1 ¼ miles.

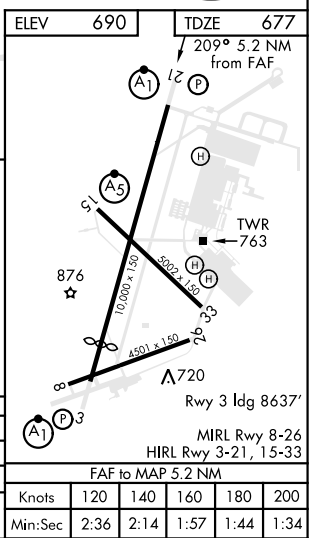
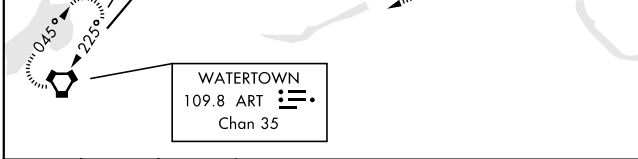
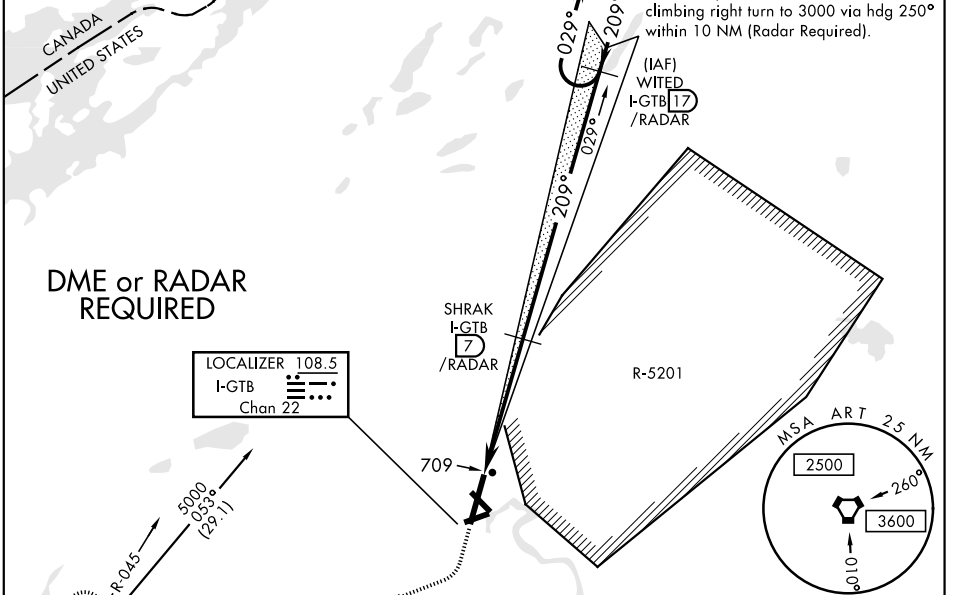
 ALSF-1

 MISSED APPROACH: Climb to 1200, then climbing right turn to 5000 direct ART VORTAC and hold. Continue climb-in-hold to 5000.

ATIS 119.525	WHEELER-SACK APP CON 124.875 257.6	WHEELER-SACK TOWER 118.75 290.25	GND CON 121.9 229.8	CLNC DEL 121.9	ASR/PAR
------------------------	--	--	-------------------------------	--------------------------	---------

*** Circling NA E of Rwy 21 and 33. Circling NA for CAT E to Rwy 8-26 and 15-33. Circling NA for CAT B, C and D to Rwy 8.

 ALTERNATE MISSED APPROACH: When directed by ATC, climb to 1200, then climbing right turn to 3000 via hdg 250° within 10 NM (Radar Required).



CATEGORY	A	B	C	D	E
S-ILS 21 *	877-½		200 (200-½)		
S-LOC 21 **	1020-½	343 (400-½)	1020-¾	343 (400-¾)	1520-3
CIRCLING ***	1180-1	490 (500-1)	1180-1½ 490 (500-1½)	1240-2 550 (600-2)	1520-3 830 (900-3)

FORT DRUM, NEW YORK
Amdt 2A 12DEC13

44°03'N-75°43'W

WHEELER-SACK AAF (KGTB)

ILS or LOC RWY 21

NE-2, 10 SEP 2020 to 08 OCT 2020

NE-2, 10 SEP 2020 to 08 OCT 2020