

FORT DRUM, NEW YORK

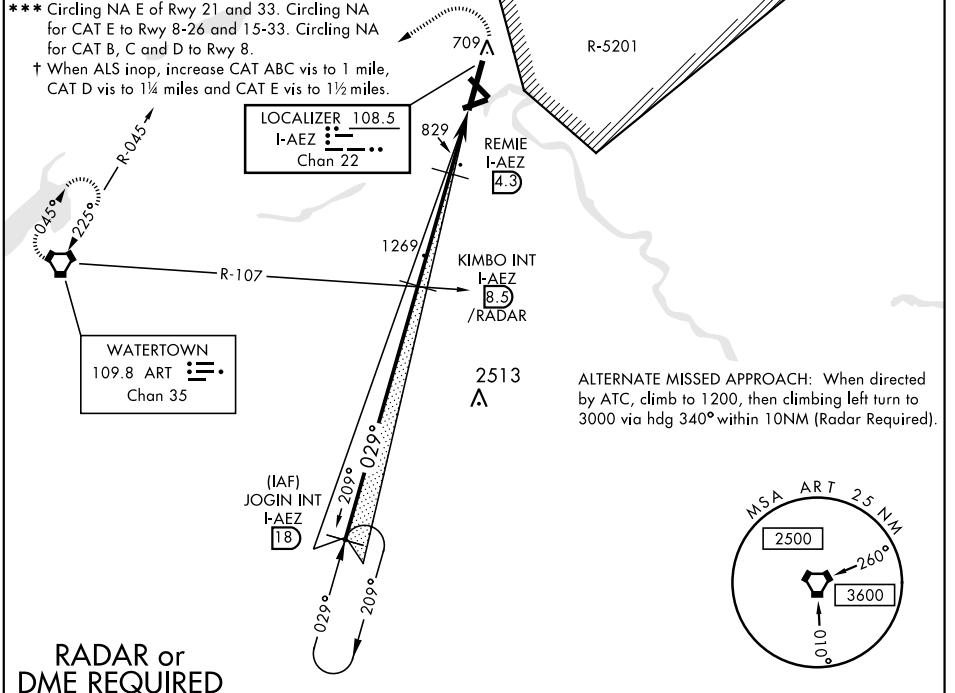
ILS or LOC RWY 3

LOC/DME I-AEZ 108.5 Chan 22	APCH CRS 029°	Rwy ldg TDZE Arprt Elev 8637 685 690	AL-5754 [USA]	WHEELER-SACK AAF (KGTB)
--	-------------------------	--	---------------	-------------------------

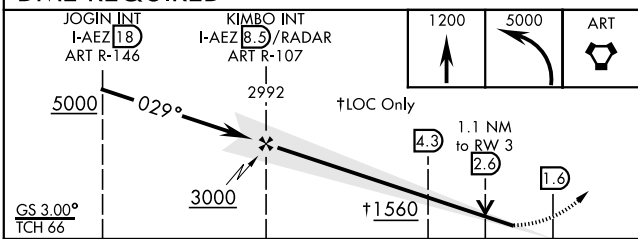
▼ * When ALS inop, increase CAT ABCDE vis to ¾ mile.
****** When ALS inop, increase CAT A vis to 1 mile, CAT B vis to 1½ miles, CAT C vis to 2½ miles, CAT D vis to 2¾ miles, and CAT E vis to 3 miles.

ALSF-1 MISSED APPROACH: Climb to 1200, then climbing left turn to 5000 direct ART VORTAC and hold. Continue climb-in-hold to 5000.

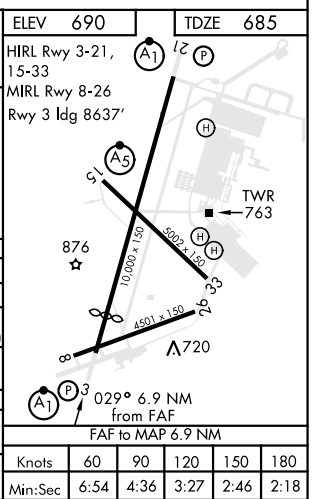
ATIS 119.525	WHEELER-SACK APP CON 124.875 257.6	WHEELER-SACK TOWER 118.75 290.25	GND CON 121.9 229.8	CLNC DEL 121.9	ASR/PAR
------------------------	--	--	-------------------------------	--------------------------	---------



RADAR or DME REQUIRED



ELEV 690	TDZE 685																																										
HIRL Rwy 3-21, 15-33	MIRL Rwy 8-26																																										
Rwy 3 ldg 8637'																																											
<table border="1"> <thead> <tr> <th>CATEGORY</th> <th>A</th> <th>B</th> <th>C</th> <th>D</th> <th>E</th> </tr> </thead> <tbody> <tr> <td>S-ILS 3 *</td> <td colspan="2">885-½</td> <td colspan="3">200 (200-½)</td> </tr> <tr> <td>S-LOC 3 **</td> <td>1560-½ 875 (900-½)</td> <td>1560-¾ 875 (900-¾)</td> <td>1560-2 875 (900-2)</td> <td>1560-2¼ 875 (900-2¼)</td> <td>1560-2½ 875 (900-2½)</td> </tr> <tr> <td>*** CIRCLING</td> <td>1560-1 870 (900-1)</td> <td>1560-1¼ 870 (900-1¼)</td> <td>1560-2½ 870 (900-2½)</td> <td>1560-2¾ 870 (900-2¾)</td> <td>1560-3 870 (900-3)</td> </tr> <tr> <td colspan="6" style="text-align:center">DME MINIMUMS</td> </tr> <tr> <td>S-LOC 3 †</td> <td>1080-½</td> <td>395 (400-½)</td> <td>1080-¾</td> <td>395 (400-¾)</td> <td>1080-1 395 (400-1)</td> </tr> <tr> <td>*** CIRCLING</td> <td>1180-1</td> <td>490 (500-1)</td> <td>1180-1½</td> <td>1240-2 490 (500-1½)</td> <td>1520-3 830 (900-3)</td> </tr> </tbody> </table>		CATEGORY	A	B	C	D	E	S-ILS 3 *	885-½		200 (200-½)			S-LOC 3 **	1560-½ 875 (900-½)	1560-¾ 875 (900-¾)	1560-2 875 (900-2)	1560-2¼ 875 (900-2¼)	1560-2½ 875 (900-2½)	*** CIRCLING	1560-1 870 (900-1)	1560-1¼ 870 (900-1¼)	1560-2½ 870 (900-2½)	1560-2¾ 870 (900-2¾)	1560-3 870 (900-3)	DME MINIMUMS						S-LOC 3 †	1080-½	395 (400-½)	1080-¾	395 (400-¾)	1080-1 395 (400-1)	*** CIRCLING	1180-1	490 (500-1)	1180-1½	1240-2 490 (500-1½)	1520-3 830 (900-3)
CATEGORY	A	B	C	D	E																																						
S-ILS 3 *	885-½		200 (200-½)																																								
S-LOC 3 **	1560-½ 875 (900-½)	1560-¾ 875 (900-¾)	1560-2 875 (900-2)	1560-2¼ 875 (900-2¼)	1560-2½ 875 (900-2½)																																						
*** CIRCLING	1560-1 870 (900-1)	1560-1¼ 870 (900-1¼)	1560-2½ 870 (900-2½)	1560-2¾ 870 (900-2¾)	1560-3 870 (900-3)																																						
DME MINIMUMS																																											
S-LOC 3 †	1080-½	395 (400-½)	1080-¾	395 (400-¾)	1080-1 395 (400-1)																																						
*** CIRCLING	1180-1	490 (500-1)	1180-1½	1240-2 490 (500-1½)	1520-3 830 (900-3)																																						
<table border="1"> <thead> <tr> <th>Knots</th> <th>60</th> <th>90</th> <th>120</th> <th>150</th> <th>180</th> </tr> </thead> <tbody> <tr> <td>Min:Sec</td> <td>6:54</td> <td>4:36</td> <td>3:27</td> <td>2:46</td> <td>2:18</td> </tr> </tbody> </table>		Knots	60	90	120	150	180	Min:Sec	6:54	4:36	3:27	2:46	2:18																														
Knots	60	90	120	150	180																																						
Min:Sec	6:54	4:36	3:27	2:46	2:18																																						



FORT DRUM, NEW YORK

44°03'N-75°43'W

WHEELER-SACK AAF (KGTB)

Amdt 2A 12DEC13

ILS or LOC RWY 3

NE-2, 10 SEP 2020 to 08 OCT 2020

NE-2, 10 SEP 2020 to 08 OCT 2020