

APCH CRS 147°	Rwy Idg 5002
	TDZE 687
	Arpt Elev 690

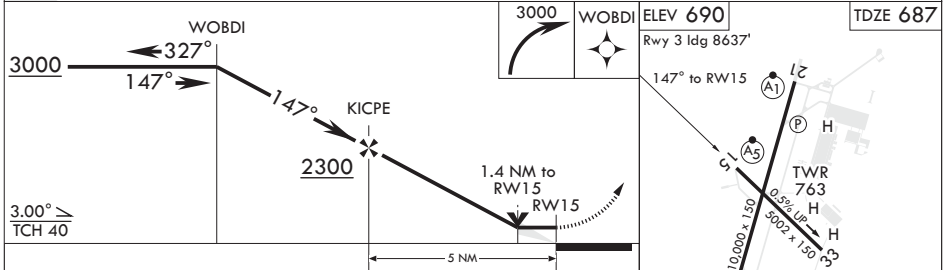
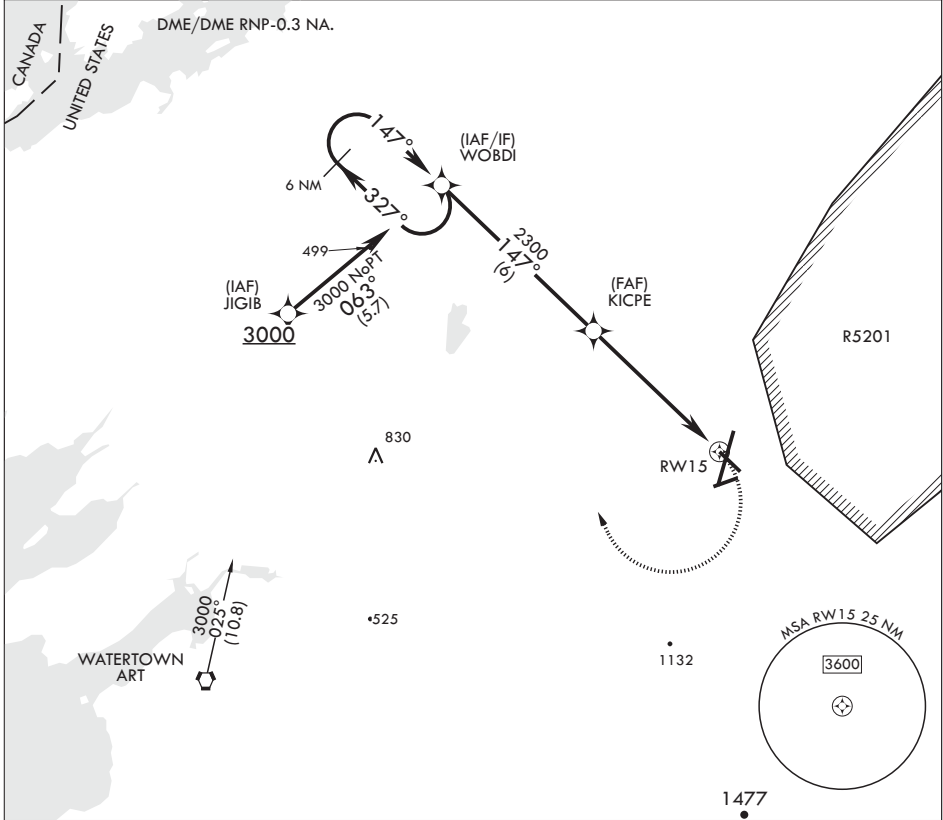
AL-5754 (USA)

WHEELER SACK AAF (KGTB)

⚠ * Circling NA E of Rws 21 and 33. Circling NA for CAT BCD to Rwy 08.

MALSR MISSED APPROACH: Climbing right turn to 3000 direct WOBDI and hold.

ATIS 119.525	APP CON/DEP CON 124.875 257.6	TOWER 118.75 290.25	GND CON 121.9 229.8	CLNC DEL 121.9	ASR/PAR
-----------------	----------------------------------	------------------------	------------------------	-------------------	---------



CATEGORY	A	B	C	D
LNVA MDA	1140-1/2 453 (500-1/2)	1140-1 453 (500-1)		
CIRCLING*	1180-1 490 (500-1)	1240-1 550 (600-1)	1280-1 590 (600-1/2)	1460-2 770 (800-2 1/2)

MIRL Rwy 8-26 HIRL Rws 3-21, 15-33 RAIL Rwy 15

NE-2, 10 SEP 2020 to 08 OCT 2020

NE-2, 10 SEP 2020 to 08 OCT 2020