

FORT DRUM, NEW YORK

# RNAV (GPS) RWY 21

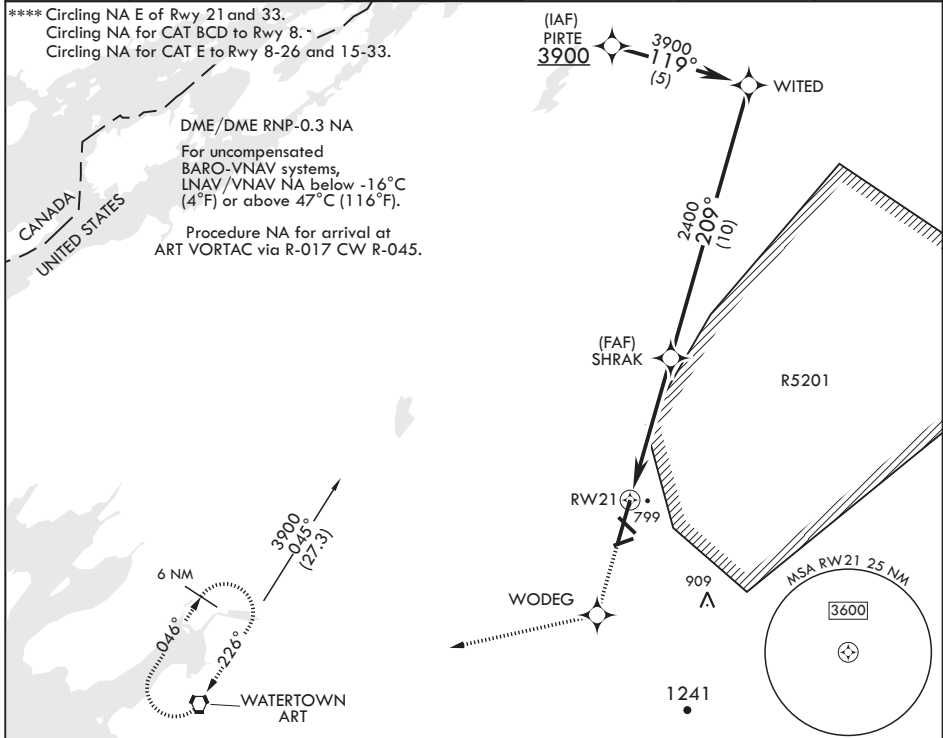
WAAS CH 63007 W21A	APCH CRS 209°	Rwy ldg 10,000 TDZE 677 Arpt Elev 690
--------------------------	------------------	--

AL-5754 (USA)

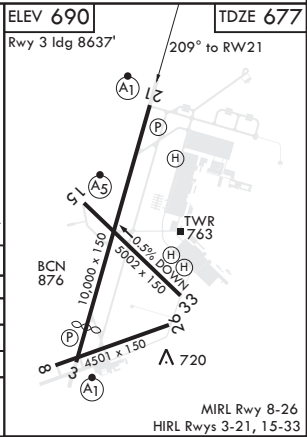
WHEELER SACK AAF (KGTB)

<b>V</b> * When ALS inop, increase CAT ABCDE vis to 3/4 mile. ** When ALS inop, increase CAT ABCDE vis to 1 1/4 miles. *** When ALS inop, increase CAT ABC vis to 1 mile, CAT DE vis to 1 1/4 miles.	ALSF-1 	MISSED APPROACH: Climb to 3000 direct WODEG and via 270° track to ART VORTAC and hold.

ATIS 119.525	APP CON/DEP CON 124.875 257.6	TOWER 118.75 290.25	GND CON 121.9 229.8	CLNC DEL 121.9	ASR/PAR
-----------------	----------------------------------	------------------------	------------------------	-------------------	---------



3000 ↑ WODEG ✧	VGS1 and RNAV glidepath not coincident.				
†LNAV only					
	5.2 NM				
CATEGORY	A	B	C	D	E
LPV DA*	877-1/2		200	(200-1/2)	
LNAV/VNAV DA**	1056-3/4		379	(400-3/4)	
LNAV MDA***	1020-1/2	343 (400-1/2)	1020-3/4	343 (400-3/4)	
CIRCLING****	1180-1	490 (500-1)	1180-1 1/2 490 (500-1 1/2)	1240-2 550 (600-2)	1520-3 830 (900-3)



FORT DRUM, NEW YORK

44°03'N - 75°43'W

WHEELER SACK AAF (KGTB)

Amdt 1A 12DEC13

# RNAV (GPS) RWY 21

NE-2, 10 SEP 2020 to 08 OCT 2020

NE-2, 10 SEP 2020 to 08 OCT 2020