

FORT DRUM, NEW YORK

# RNAV (GPS) RWY 3

WAAS CH 93714 W03A	APCH CRS 029°	Rwy ldg TDZE Arpt Elev	8637 685 690
--------------------------	------------------	------------------------------	--------------------

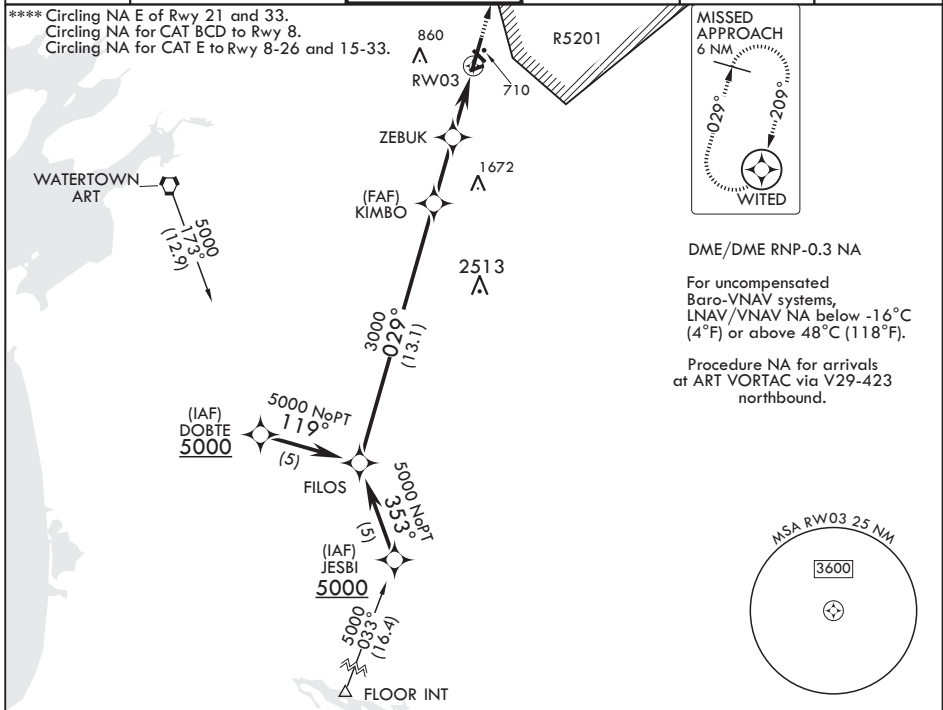
AL-5754 (USA)

WHEELER SACK AAF (KGTB)

**ALS-1** MISSED APPROACH: Climb to 4000 direct WITED and hold.

\* When ALS inop, increase CAT ABCDE vis to 3/4 mile.  
 \*\* When ALS inop, increase CAT ABCDE vis to 1 1/4 miles.  
 \*\*\* When ALS inop, increase CAT AB vis to 1 mile, CAT C vis to 1 1/4 miles, CAT DE vis to 1 1/2 miles.

ATIS 119.525	APP CON/DEP CON 124.875 257.6	TOWER 118.75 290.25	GND CON 121.9 229.8	CLNC DEL 121.9	ASR/PAR
-----------------	----------------------------------	------------------------	------------------------	-------------------	---------



FILOS 5000	029°	KIMBO 3000	ZEBUK 3.6 NM to RW03	1880	1.2 NM to RW03	RW03	4000 WITED ELEV 690 TDZE 685
------------	------	------------	----------------------	------	----------------	------	------------------------------

GP 3.00° TCH 66

† LNAV only

Rwy 3 ldg 8637'

CATEGORY	A	B	C	D	E
LPV DA*	885-1/2		200	(200-1/2)	
LNAV/VNAV DA**	1040-3/4		355	(400-3/4)	
LNAV MDA***	1140-1/2 455 (500-1/2)		1140-3/4 455 (500-3/4)	1140-1 455 (500-1)	
CIRCLING****	1180-1 490 (500-1)		1180-1 1/2 490 (500-1 1/2)	1240-2 550 (600-2)	1520-3 830 (900-3)

BCN 876 10,000 x 150 3000 x 150 0.5% UP 763 TWR 720 76 33 4501 x 150 029° to RW03 HIRL Rwy 8-26 HIRL Rws 3-21, 15-33

FORT DRUM, NEW YORK  
Amdt 1A 12DEC13

44°03'N - 75°43'W

WHEELER SACK AAF (KGTB)

# RNAV (GPS) RWY 3

NE-2, 10 SEP 2020 to 08 OCT 2020

NE-2, 10 SEP 2020 to 08 OCT 2020