

WAAS CH 42901 W18A	APP CRS 185°	Rwy Idg 5801 TDZE 730 Apt Elev 730
--	------------------------	---

RNAV (GPS) RWY 18

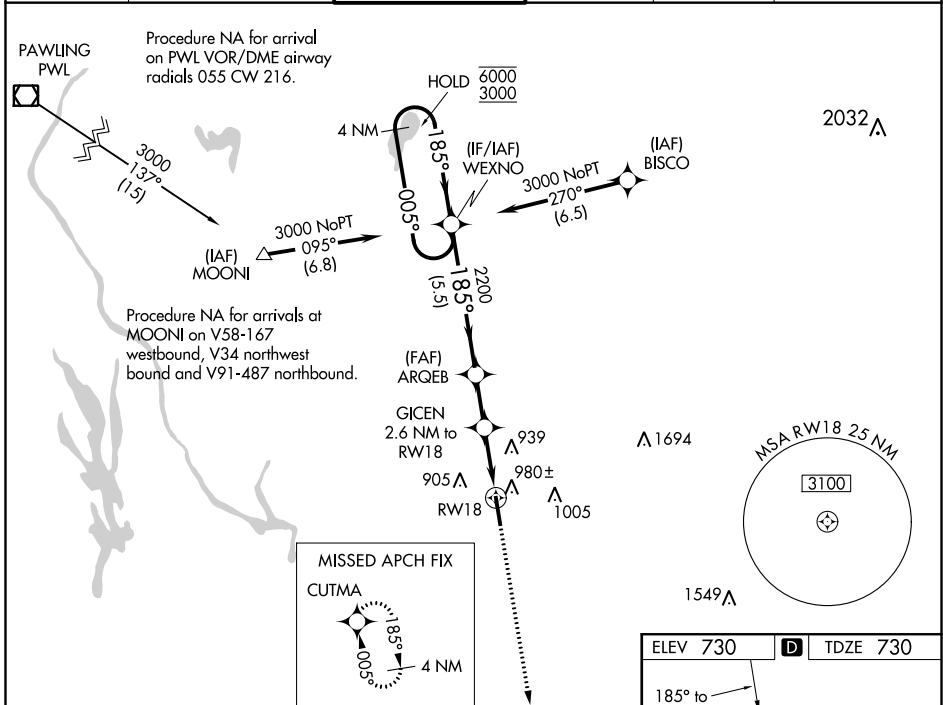
WATERBURY-OXFORD (OXC)

RNP APCH.

▼ Rwy 18 helicopter visibility reduction below 3/4 SM NA.
▲ For uncompensated Baro-VNAV systems, LNAV/VNAV NA below -16°C or above 54°C.

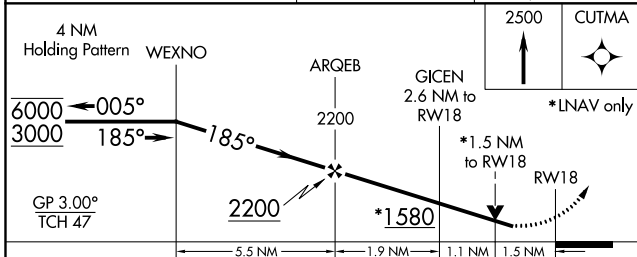
MISSED APPROACH: Climb to 2500 direct CUTMA and hold.

ATIS 132.975	NEW YORK APP CON 124.075 343.65	OXFORD TOWER ★ 118.475 (CTAF) 0	GND CON 121.65	CLNC DEL 121.65	UNICOM 122.95
------------------------	---	---	--------------------------	---------------------------	-------------------------

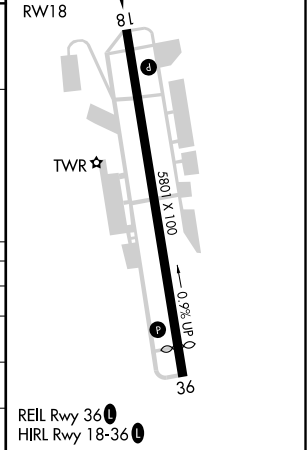


NE-1, 10 SEP 2020 to 08 OCT 2020

NE-1, 10 SEP 2020 to 08 OCT 2020



ELEV 730	D	TDZE 730
----------	---	----------



CATEGORY	A	B	C	D
LPV DA		1140-1 1/8	410 (500-1 1/8)	
LNAV/VNAV DA		1141-1 1/8	411 (500-1 1/8)	
LNAV MDA	1240-1	510 (600-1)	1240-1 3/8	510 (600-1 3/8)
CIRCLING	1300-1	570 (600-1)	1380-1 3/4	1460-2 1/4
			650 (700-1 3/4)	730 (800-2 1/4)

REIL Rwy 36 0
HIRL Rwy 18-36 0