

WAAS CH <b>61335</b> <b>W35A</b>	APP CRS <b>348°</b>	Rwy Idg TDZE Apt Elev	<b>5003</b> <b>927</b> <b>936</b>
--	------------------------	-----------------------------	---

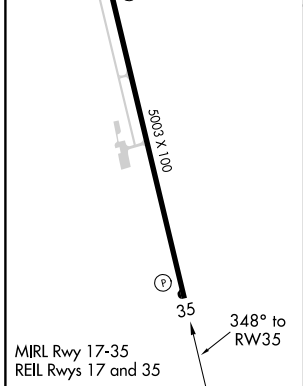
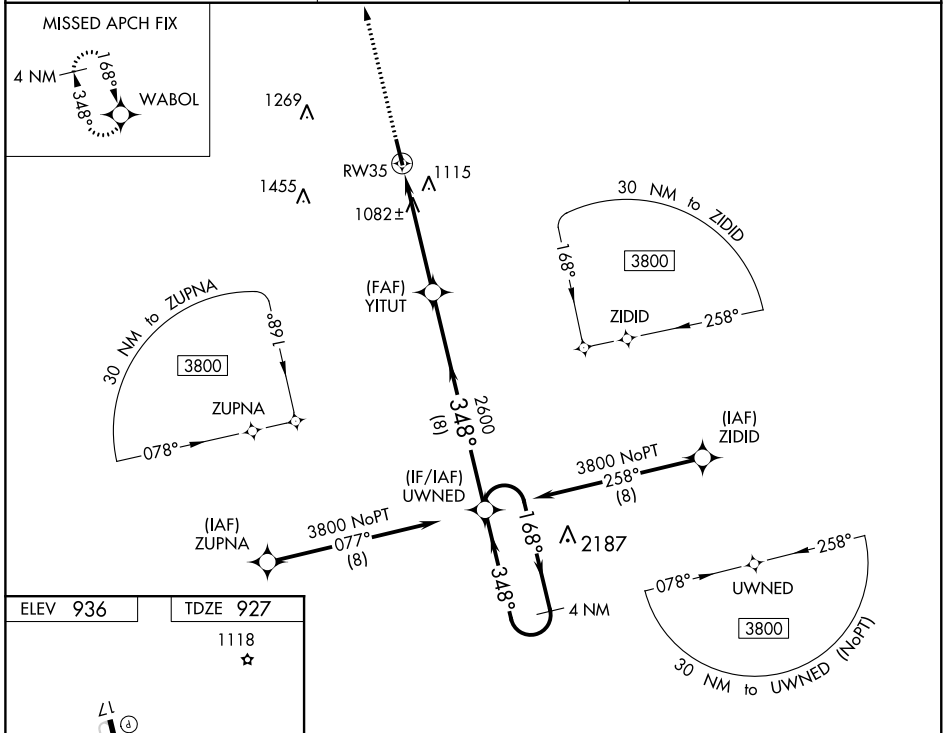
# RNAV (GPS) RWY 35

LAWRENCEBURG-LAWRENCE COUNTY (2M2)

**⚠** Circling Rwy 17 NA at night. For uncompensated Baro-VNAV systems, LNAV/VNAV NA below -16°C (5°F) or above 54°C (130°F). DME/DME RNP-0.3 NA. When local altimeter setting not received, use Huntsville Intl-Carl T Jones Field altimeter setting and increase all DA 142 feet and all MDA 140 feet; increase LPV all Cats visibility ¼ mile, LNAV/VNAV all Cats visibility ⅜ mile. Rwy 17 helicopter visibility reduction below 1 SM NA. Rwy 35 helicopter visibility reduction below ¾ SM NA.

**⚠** NA MISSED APPROACH: Climb to 3700 direct WABOL and hold.

AWOS-3 <b>120.175</b>	MEMPHIS CENTER <b>125.85 379.25</b>	UNICOM <b>122.8 (CTAF)</b>
--------------------------	--	-------------------------------



3700 $\uparrow$	WABOL $\star$	VGSI and RNAV glidepath not coincident (VGSI Angle 3.00/TCH 50).	4 NM Holding Pattern
*LNAV only.		YITUT	UWNED
JOMVU 2.4 NM to RW35		168° $\rightarrow$	3800
RW35		348° $\leftarrow$	3800
*1800		2600	GP 3.20° TCH 60
2.4 NM		2.4 NM	8 NM
CATEGORY	A	B	C
LPV DA	1293-1 $\frac{1}{8}$	366 (400-1 $\frac{1}{8}$ )	NA
LNAV/VNAV DA	1354-1 $\frac{1}{4}$	427 (500-1 $\frac{1}{4}$ )	NA
LNAV MDA	1340-1	413 (500-1)	NA
<b>C</b> CIRCLING	1500-1	564 (600-1)	NA

SE-1, 10 SEP 2020 to 08 OCT 2020

SE-1, 10 SEP 2020 to 08 OCT 2020