

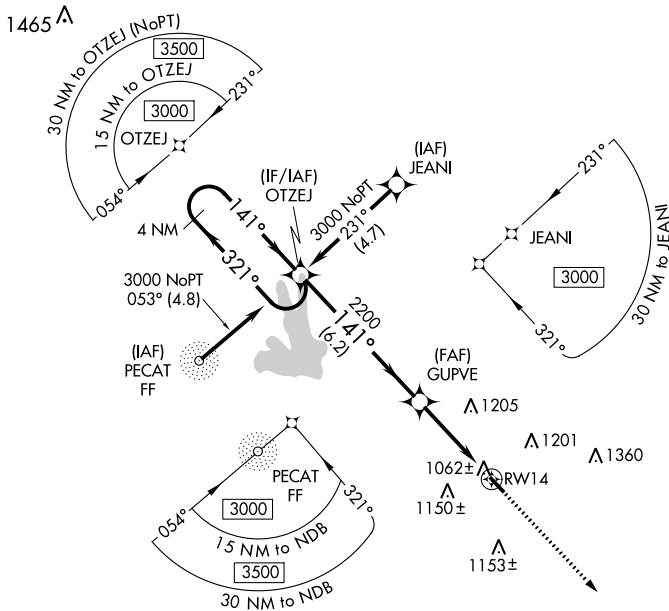
WAAS CH <b>70429</b> <b>W14A</b>	APP CRS <b>141°</b>	Rwy Idg TDZE Apt Elev	<b>3201</b> <b>958</b> <b>958</b>
--	------------------------	-----------------------------	---

# RNAV (GPS) RWY 14

GRIFFIN-SPALDING COUNTY (6A2)

RNP APCH.	When local altimeter setting not received, use Atlanta Rgnl Falcon Field altimeter setting and increase all MDA 60 feet. Rwy 14 helicopter visibility reduction below 1 SM NA. Procedure NA at night.	MISSED APPROACH: Climb to 3000 direct LUFEV and hold.
-----------	---	---

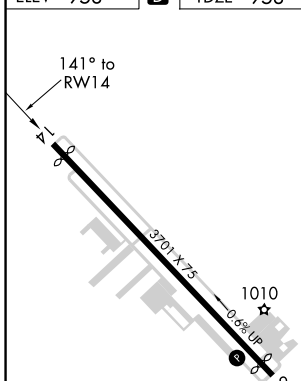
AWOS-3 <b>119.750</b>	ATLANTA APP CON <b>128.575 343.675</b>	CLNC DEL <b>128.575 343.675</b>	UNICOM <b>123.075 (CTAF) 0</b>
--------------------------	---	------------------------------------	-----------------------------------



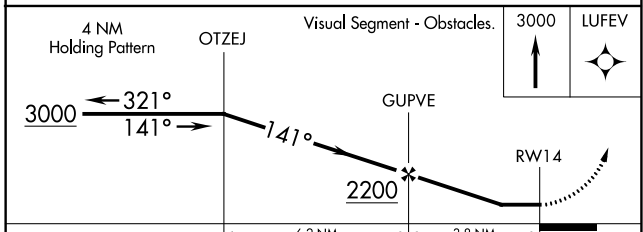
SE-4, 10 SEP 2020 to 08 OCT 2020

SE-4, 10 SEP 2020 to 08 OCT 2020

ELEV 958	<b>D</b>	TDZE 958
----------	----------	----------



REIL Rwy 14 and 32  
MIRL Rwy 14-32 0



CATEGORY	A	B	C	D
LP MDA	1320-1	362 (400-1)	NA	
LNAV MDA	1400-1	442 (500-1)	NA	