

WAAS CH 48900 W01A	APP CRS 005°	Rwy Idg 3001 TDZE 228 Apt Elev 228
---------------------------------	------------------------	---

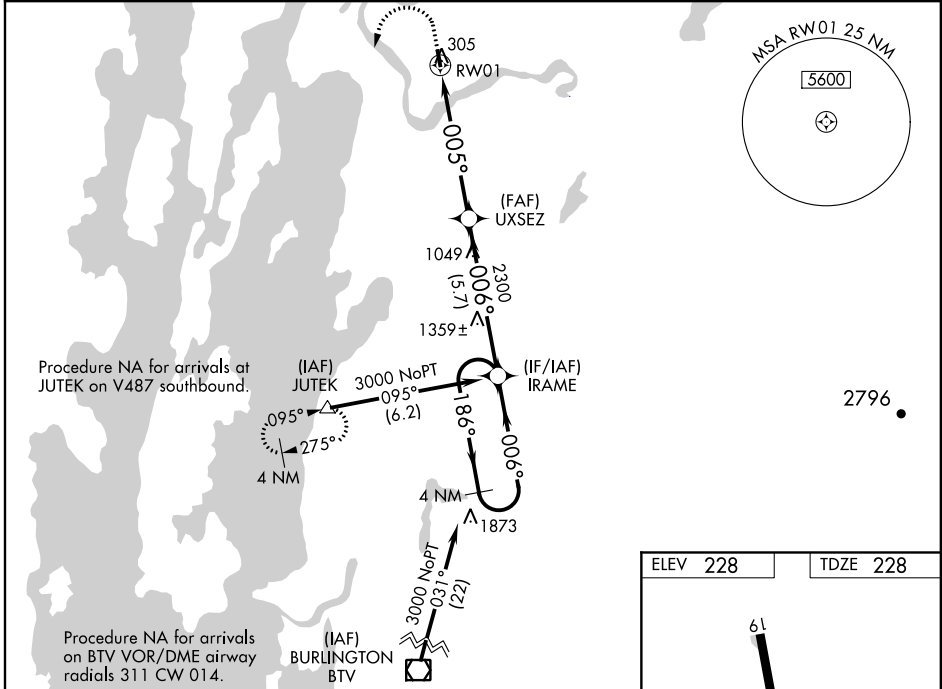
RNAV (GPS) RWY 1

FRANKLIN COUNTY STATE (F'SO)

⚠ Circling to Rwy 19 NA at night. Baro-VNAV NA when using Plattsburgh altimeter setting. For uncompensated Baro-VNAV systems, LNAV/VNAV NA below -15°C (5°F) or above 54°C (130°F). When VGSI inop, Straight-in/Circling Rwy 1 procedure NA at night. DME/DME RNP-0.3 NA. Visibility reduction by helicopters NA. When local altimeter setting not received, use Plattsburgh altimeter setting and increase all DA 55 feet and all MDA 60 feet; increase LNAV/VNAV all Cals and LNAV and Circling Cat B visibilities ¼ mile.

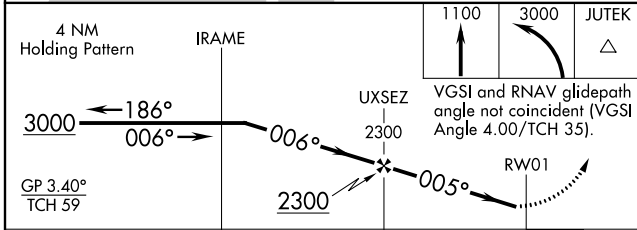
MISSED APPROACH: Climb to 1100 then climbing left turn to 3000 direct JUTEK and hold.

AWOS-3 119.025	BURLINGTON APP CON ★ (EAST) 121.1 (WEST) 278.8 360.8	UNICOM 122.8 (CTAF) 0
--------------------------	--	--



NE-1, 10 SEP 2020 to 08 OCT 2020

NE-1, 10 SEP 2020 to 08 OCT 2020



ELEV 228	TDZE 228
----------	----------

MRL Rwy 1-19 **0**
REIL Rws 1 and 19 **0**

CATEGORY	A	B	C	D
LPV DA	512-1	284 (300-1)		NA
LNAV/VNAV DA	1024-2½	796 (800-2½)		NA
LNAV MDA	920-1	692 (700-1)		NA
CIRCLING	920-1	692 (700-1)		NA