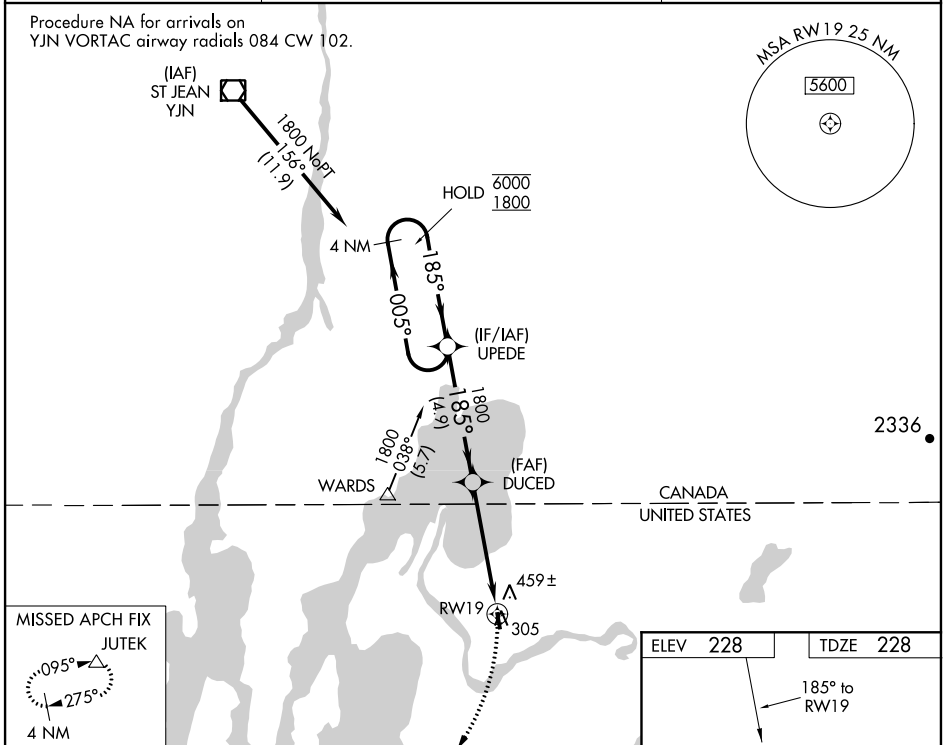


WAAS CH <b>78122</b> <b>W19A</b>	APP CRS <b>185°</b>	Rwy Idg TDZE <b>228</b> Apt Elev <b>228</b>	<b>3001</b>
--	------------------------	---	-------------

# RNAV (GPS) RWY 19

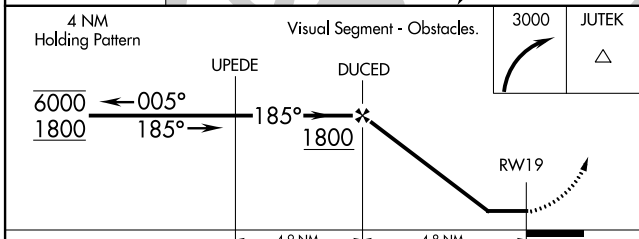
FRANKLIN COUNTY STATE (F'SO)

RNP APCH.		BURLINGTON APP CON* (EAST) <b>278.8</b> (WEST) <b>360.8</b>		UNICOM <b>122.8</b> (CTAF) <b>0</b>
AWOS-3 <b>119.025</b>				
<p>Procedure NA at night. Rwy 19 helicopter visibility reduction below 1 SM NA. When local altimeter setting not received, use Plattsburgh altimeter setting and increase all MDA 80 feet.</p>		MISSED APPROACH: Climbing right turn to 3000 direct JUTEK and hold.		

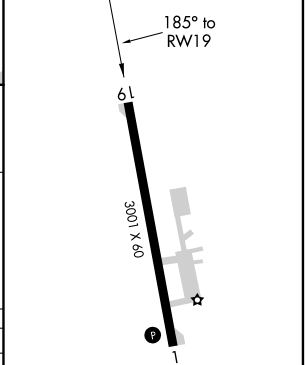


NE-1, 10 SEP 2020 to 08 OCT 2020

NE-1, 10 SEP 2020 to 08 OCT 2020



ELEV <b>228</b>	TDZE <b>228</b>
-----------------	-----------------



CATEGORY	A	B	C	D
LP MDA	660-1	432 (500-1)		NA
LNAV MDA	720-1	492 (500-1)		NA
CIRCLING	780-1 552 (600-1)	820-1 592 (600-1)		NA

MIRL Rwy 1-19 **0**  
REIL Rwys 1 and 19 **0**