

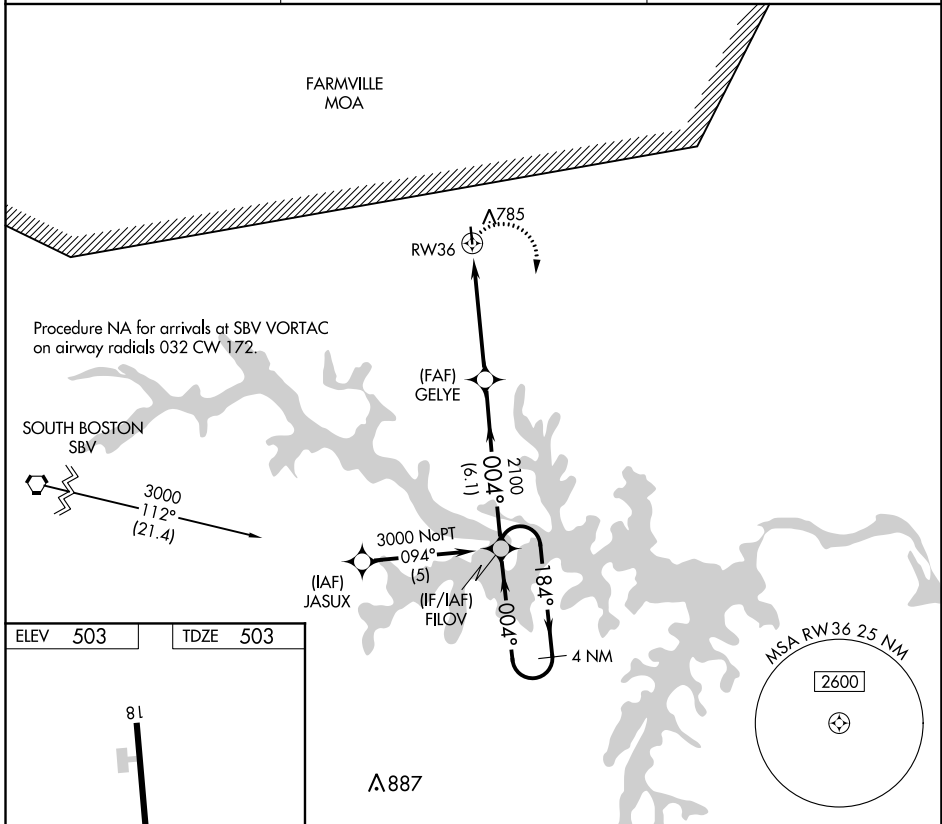
APP CRS	Rwy Idg	3400
004°	TDZE	503
	Apt Elev	503

RNAV (GPS) RWY 36

CHASE CITY MUNI (CXE)

RNP APCH.	Use South Hill altimeter setting, when not received use Danville altimeter setting and increase all MDA 60 feet. Procedure NA at night. Rwy 36 helicopter visibility reduction below 1 SM NA.	MISSED APPROACH: Climbing right turn to 3000 direct FILOV and hold.
▼ Use South Hill altimeter setting, when not received use Danville altimeter setting and increase all MDA 60 feet. Procedure NA at night. Rwy 36 helicopter visibility reduction below 1 SM NA.		

AWOS-3 121.225	WASHINGTON CENTER 118.75 353.9	UNICOM 122.9 (CTAF)
--------------------------	--	-------------------------------

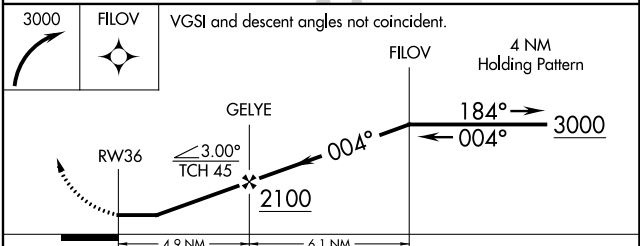


NE-3, 10 SEP 2020 to 08 OCT 2020

NE-3, 10 SEP 2020 to 08 OCT 2020

ELEV	503	TDZE	503
------	------------	------	------------

The profile view shows the vertical descent from 3000 feet to 2100 feet. It includes a 0.5% up slope and a 3600 x 50 ft obstacle. The vertical distance from the obstacle to the 2100 ft altitude is 81 feet. The vertical distance from the 2100 ft altitude to the runway (36) is 36 feet.



CATEGORY	A	B	C	D
LNAV MDA	1500-3	997 (1000-3)	NA	