

APP CRS **255°**
 Rwy Idg **3111**
 TDZE **1771**
 Apt Elev **1783**

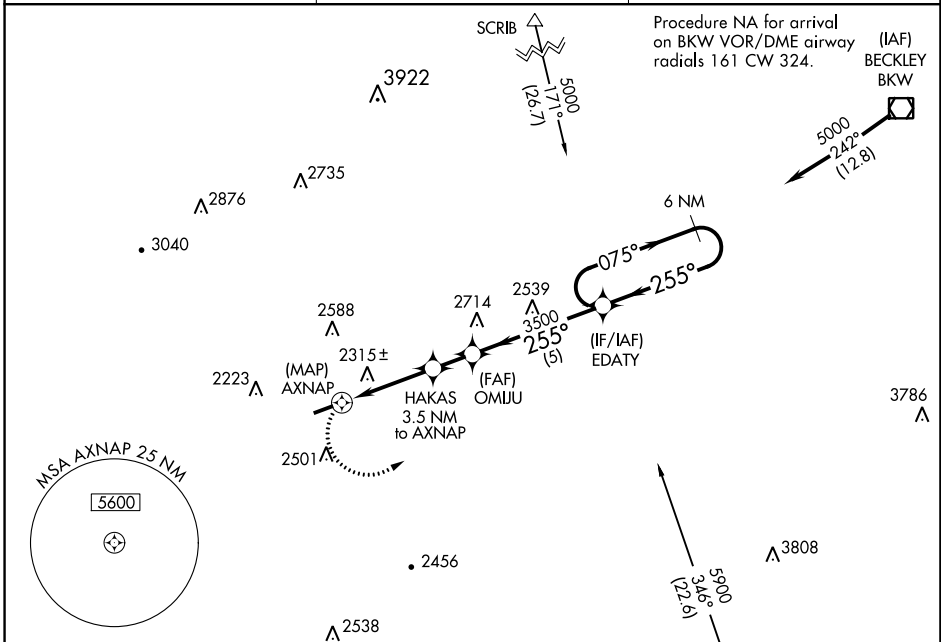
RNAV (GPS) RWY 26

KEE FIELD (I16)

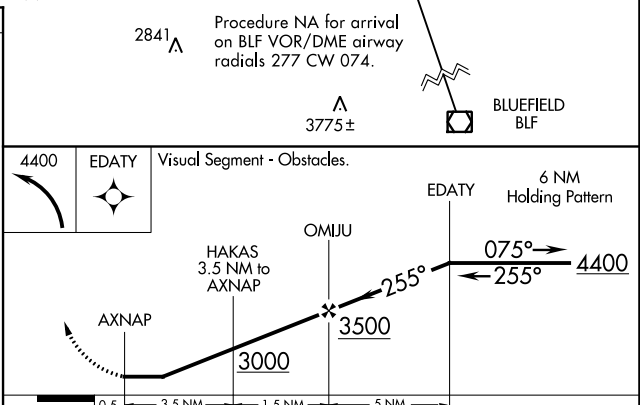
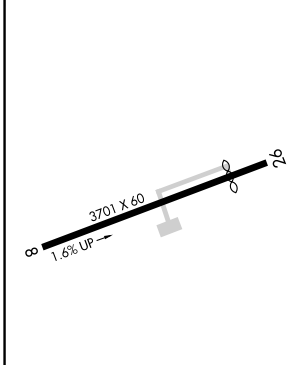
⚠ Rwy 26 helicopter visibility reduction below 1 SM NA.
⚠ NA DME/DME RNP-0.3 NA.
 Procedure NA at night.

MISSED APPROACH: Climbing left turn to 4400 direct EDATY and hold.

AWOS-3 **120.625** CHARLESTON APP CON **125.4 269.125** UNICOM **122.8 (CTAF)** **📻**



ELEV **1783** TDZE **1771**



CATEGORY	A	B	C	D
LNNAV MDA	2580-1 809 (800-1)	2580-1¼ 809 (800-1¼)	2580-2½ 809 (800-2½)	NA
CIRCLING	2620-1¼	837 (900-1¼)	2620-2½ 837 (900-2½)	NA

NE-4, 10 SEP 2020 to 08 OCT 2020

NE-4, 10 SEP 2020 to 08 OCT 2020