

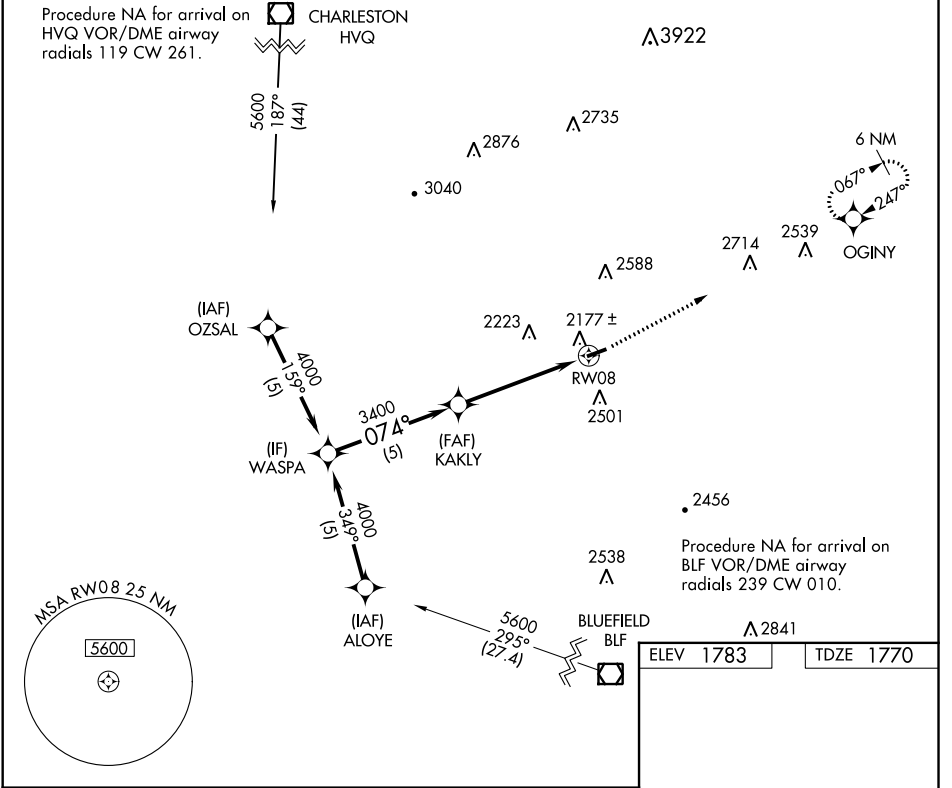
APP CRS 074°	Rwy Idg 3701
	TDZE 1770
	Apt Elev 1783

RNAV (GPS) RWY 8

KEE FIELD (I16)

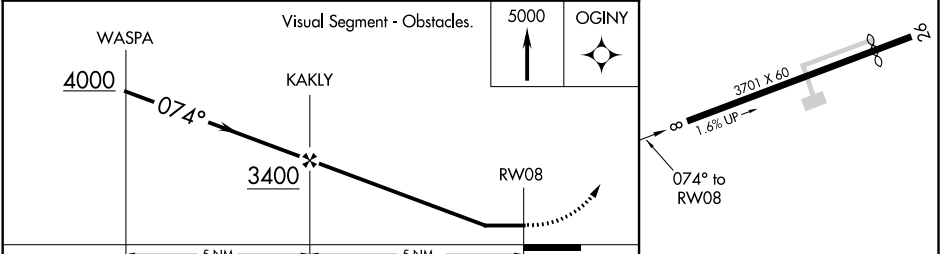
▽ Rwy 8 helicopter visibility reduction below 1 SM NA. △ NA DME/DME RNP-0.3 NA. Procedure NA at night.	MISSED APPROACH: Climb to 5000 direct OGINY and hold.
--	---

AWOS-3 120.625	CHARLESTON APP CON 125.4 269.125	UNICOM 122.8 (CTAF) 0
--------------------------	--	---------------------------------



NE-4, 10 SEP 2020 to 08 OCT 2020

NE-4, 10 SEP 2020 to 08 OCT 2020



CATEGORY	A	B	C	D
LNVA MDA	2460-1	690 (700-1)	2460-2 690 (700-2)	NA
CIRCLING	2620-1 1/4	837 (900-1 1/4)	2620-2 1/2 837 (900-2 1/2)	NA

ELEV 1783	TDZE 1770
-----------	-----------

MIRL Rwy 8-26 0
REIL Rwy 8 and 26 0