

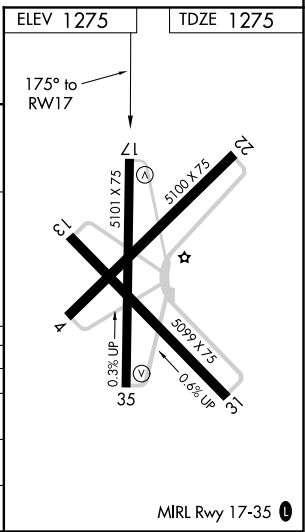
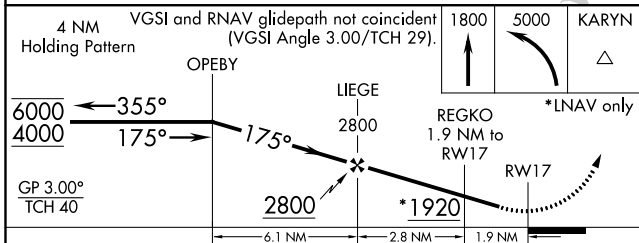
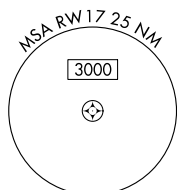
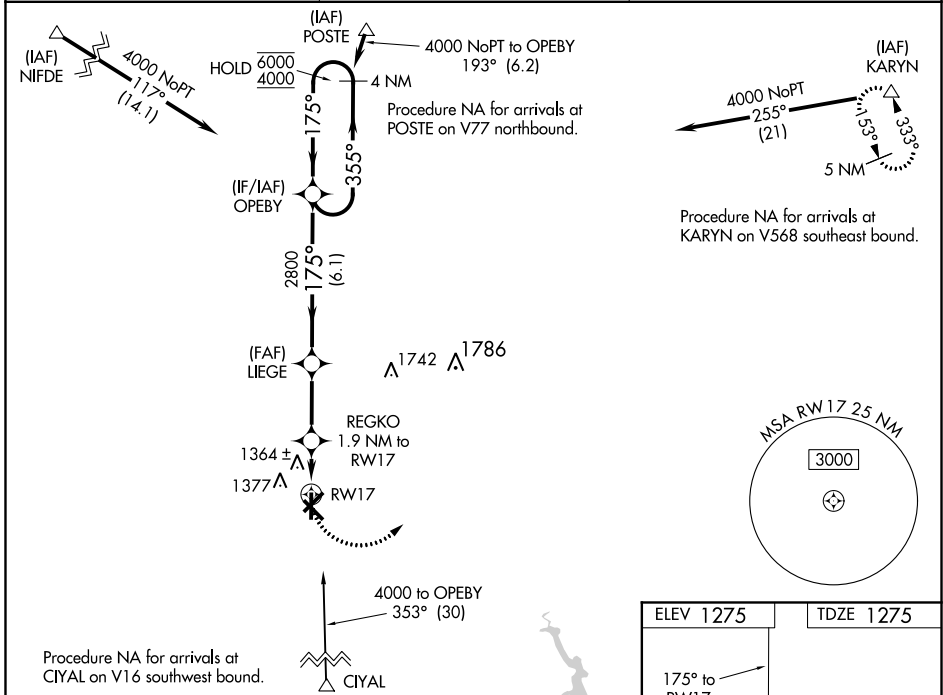
WAAS CH 97332 W17A	APP CRS 175°	Rwy Idg TDZE Apt Elev	5101 1275 1275
--	------------------------	-----------------------------	---

RNAV (GPS) RWY 17

OLNEY MUNI (ONY)

RNP APCH.	Rwy 17 helicopter visibility reduction below 3/4 SM NA. Baro-VNAV NA. Use Graham altimeter setting; when not received, use Kickapoo Downtown altimeter setting and increase all DA 52 feet all MDA 60 feet; increase LPV all Cats, LNAV/VNAV all Cats and LNAV Cat C visibility 1/8 SM.	MISSED APPROACH: Climb to 1800 then climbing left turn to 5000 direct KARYN and hold.
-----------	---	--

RPH AWOS-3 118.025	FORT WORTH CENTER 133.5 350.35	UNICOM 122.8 (CTAF) 0
------------------------------	--	---------------------------------



CATEGORY	A	B	C	D
LPV DA	1592-7/8	317 (400-7/8)		NA
LNAV/VNAV DA	1592-7/8	317 (400-7/8)		NA
LNAV MDA	1700-1	425 (500-1)	1700-1 1/4 425 (500-1 1/4)	NA
CIRCLING	1760-1	485 (500-1)	1760-1 1/2 485 (500-1 1/2)	NA

SC-2, 10 SEP 2020 to 08 OCT 2020

SC-2, 10 SEP 2020 to 08 OCT 2020