

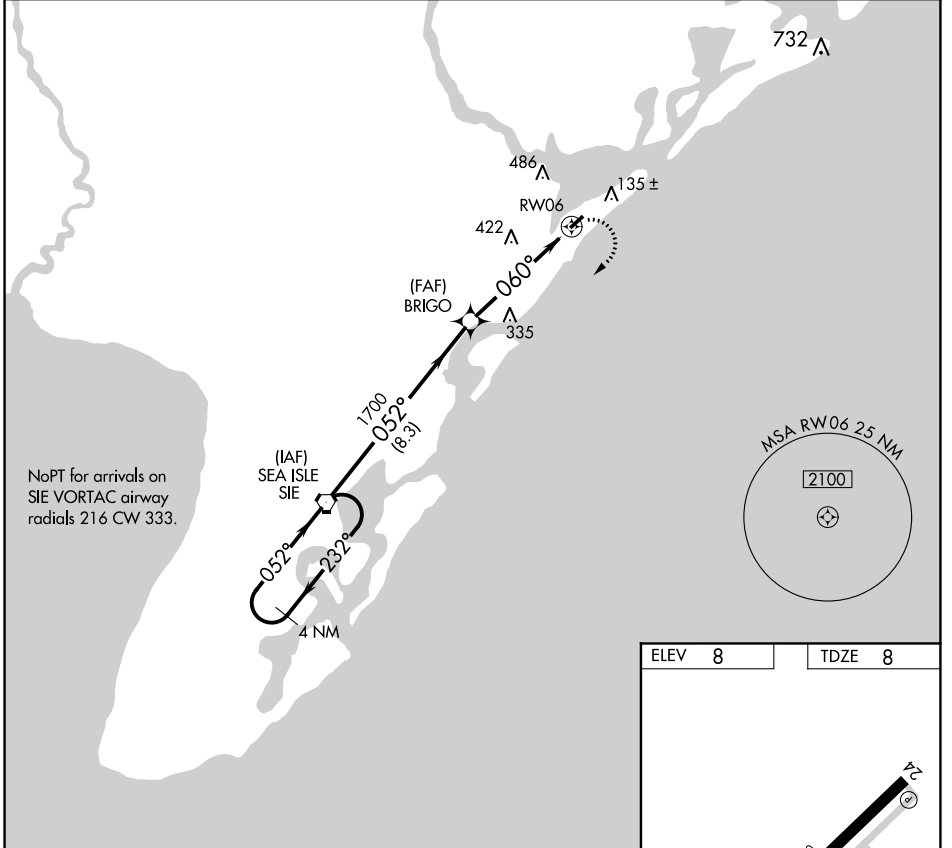
APP CRS	Rwy Idg	2972
060°	TDZE	8
	Apt Elev	8

GPS RWY 6

OCEAN CITY MUNI (26N)

⚠ NA	When local altimeter setting not received, use Atlantic City altimeter setting.	MISSED APPROACH: Climbing right turn to 2000 direct SIE VORTAC and hold.	
-------------	---	--	--

AWOS-AV 119.775	ATLANTIC CITY APP CON 124.6 327.125	CLNC DEL 133.6	UNICOM 122.7 (CTAF) 0
---------------------------	---	--------------------------	---------------------------------



NE-2, 10 SEP 2020 to 08 OCT 2020

NE-2, 10 SEP 2020 to 08 OCT 2020

