

| | | |
|-------------|----------|-------------|
| APP CRS | Rwy Idg | 3301 |
| 060° | TDZE | 1215 |
| | Apt Elev | 1215 |

RNAV (GPS) RWY 6

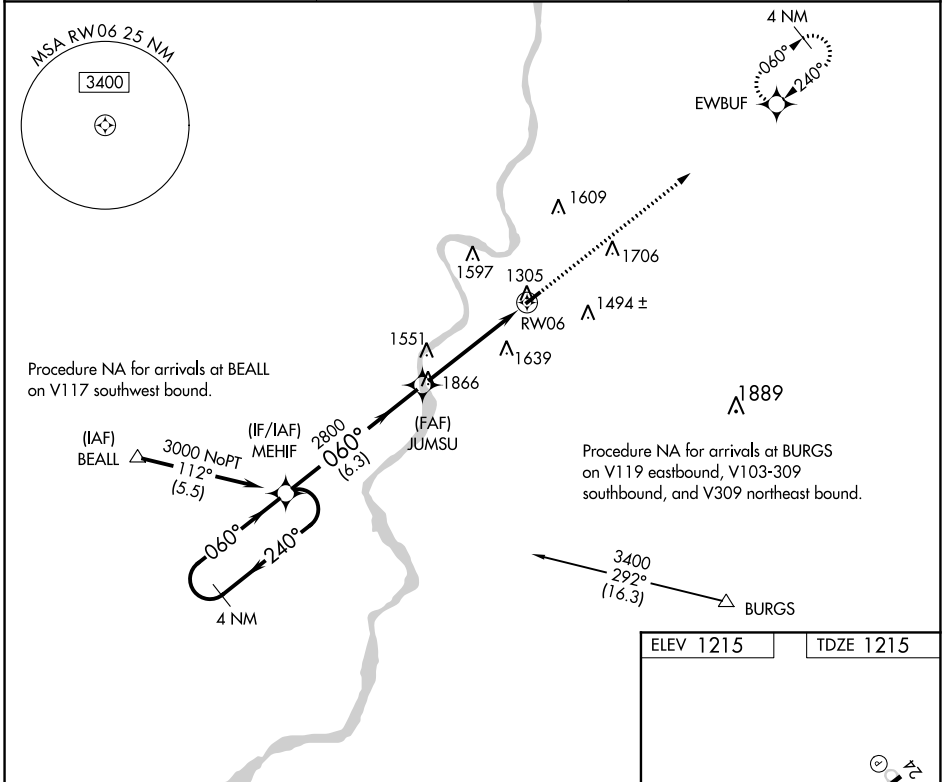
MARSHALL COUNTY (MPG)

RNP APCH

▼ Rwy 6 helicopter visibility reduction below 3/4 SM NA. VDP NA when using Wheeling altimeter setting. When local altimeter setting not received, use Wheeling altimeter setting and increase all MDA 60 feet and Cat C visibilities 1/8 mile.

MISSED APPROACH: Climb to 3100 direct EWBUF and hold.

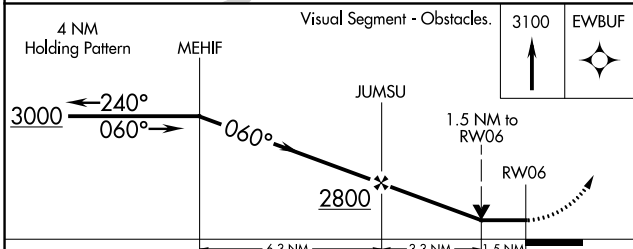
| | | |
|-------------------------|--|---------------------------------|
| AWOS-3 119.05 | CLEVELAND CENTER 126.95 239.30 | UNICOM 122.7 (CTAF) ① |
|-------------------------|--|---------------------------------|



NE-4, 10 SEP 2020 to 08 OCT 2020

NE-4, 10 SEP 2020 to 08 OCT 2020

| | |
|-----------|-----------|
| ELEV 1215 | TDZE 1215 |
|-----------|-----------|



| CATEGORY | A | B | C | D |
|----------|--------|-------------|-------------------------------|----|
| LNAV MDA | 1860-1 | 645 (700-1) | 1860-1 7/8 645 (700-1 7/8) | NA |
| CIRCLING | 1860-1 | 645 (700-1) | 1860-1 7/8 645 (700-1 7/8) | NA |

