

NDB HCY 257	APP CRS 080°	Rwy Idg 5200	TDZE 4086
		Apt Elev 4094	

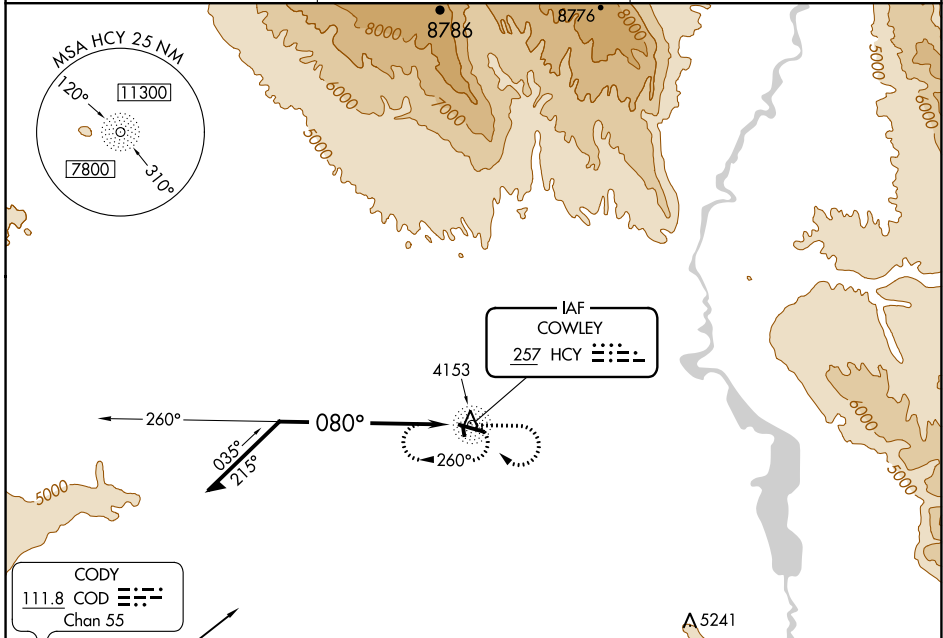
NDB RWY 9

NORTH BIG HORN COUNTY (U68)

▼ When Rwy 9 VGSI inoperative, Straight-in and Circling Rwy 9 minimums NA at night.
▲ NA When local altimeter setting not received, use Greybull altimeter setting and increase Circling Cats A/B/C MDA 80 feet and Circling Cat D MDA 100 feet. Helicopter visibility reduction below 1 SM not authorized.

MISSED APPROACH: Climb to 5700 then climbing right turn to 6400 direct HCY NDB and hold.

AWOS-3 119.925	SALT LAKE CENTER 133.25 285.6	UNICOM 122.8 (CTAF) 0
--------------------------	---	---------------------------------



ELEV	4094	TDZE	4086
------	------	------	------

080° to NDB

91 186 X 65 5200 X 75 34 27

CATEGORY	A	B	C	D
S-9	5200-1¼ 1114 (1200-1¼)	5200-1½ 1114 (1200-1½)	5200-3	1114 (1200-3)
C CIRCLING	5200-1¼ 1106 (1200-1¼)	5200-1½ 1106 (1200-1½)	5200-3 1106 (1200-3)	5260-3 1166 (1200-3)

REIL Rwys 9 and 27
MRL Rwy 9-27

NW-1, 10 SEP 2020 to 08 OCT 2020

NW-1, 10 SEP 2020 to 08 OCT 2020