

WAAS CH 86333 W09A	APP CRS 095°	Rwy Idg TDZE Apt Elev	5200 4086 4094
--	------------------------	-----------------------------	---

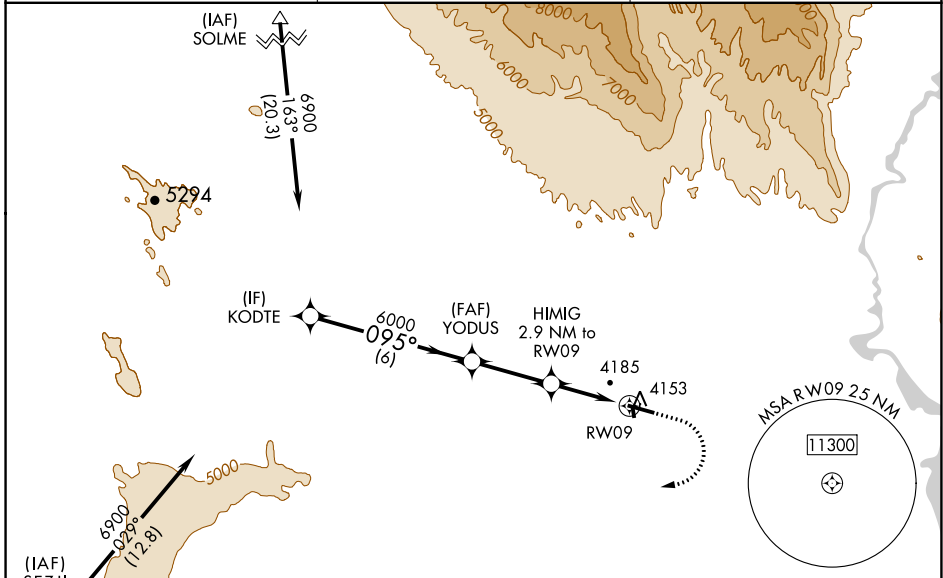
RNAV (GPS) RWY 9

NORTH BIG HORN COUNTY (U68)

▼ Baro-VNAV NA when using Greybull altimeter setting. For uncompensated Baro-VNAV systems, LNAV/VNAV NA below -23°C (-9°F) or above 49°C (121°F). DME/DME RNP-0.3 NA. When Rwy 9 VGSi inop, Straight-in and Circling minimums NA at night. Helicopter visibility reduction below 1 SM NA. When local altimeter setting not received, use Greybull altimeter setting and increase all DA 87 feet and all LPV and LNAV/VNAV visibility 1/8 mile, increase all MDA 100 feet and LNAV Cats C/D visibility 3/8 mile and increase Circling Cat C visibility 1/4 mile.

▲ MISSED APPROACH: Climb to 4600 then climbing right turn to 8500 direct SEZJI and hold.

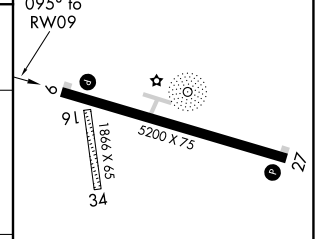
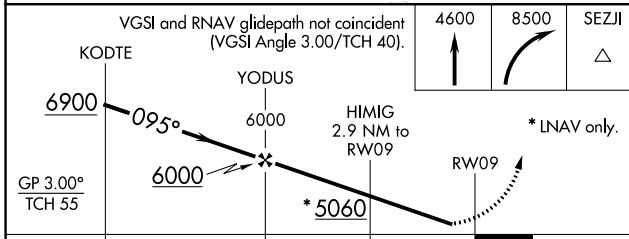
AWOS-3 119.925	SALT LAKE CENTER 133.25 285.6	UNICOM 122.8 (CTAF) 0
--------------------------	---	---------------------------------



NW-1, 10 SEP 2020 to 08 OCT 2020

NW-1, 10 SEP 2020 to 08 OCT 2020

ELEV	4094	TDZE	4086
------	------	------	------



CATEGORY	A		B		C		D	
	LPV	DA	LPV	DA	LPV	DA	LPV	DA
LPV DA			4336-1	250 (300-1)				
LNAV/VNAV DA			4344-1	258 (300-1)				
LNAV MDA			4440-1	354 (400-1)				
CIRCLING	4520-1	4680-1	4940-2 1/2	5260-3				
	426 (500-1)	586 (600-1)	846 (900-2 1/2)	1166 (1200-3)				

REIL Rwy 9 and 27 **0**
MRL Rwy 9-27 **0**