

WAAS CH <b>40036</b> <b>W21A</b>	APP CRS <b>211°</b>	Rwy Idg <b>3894</b> TDZE <b>899</b> Apt Elev <b>899</b>
--	------------------------	---

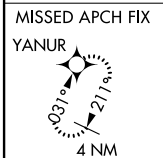
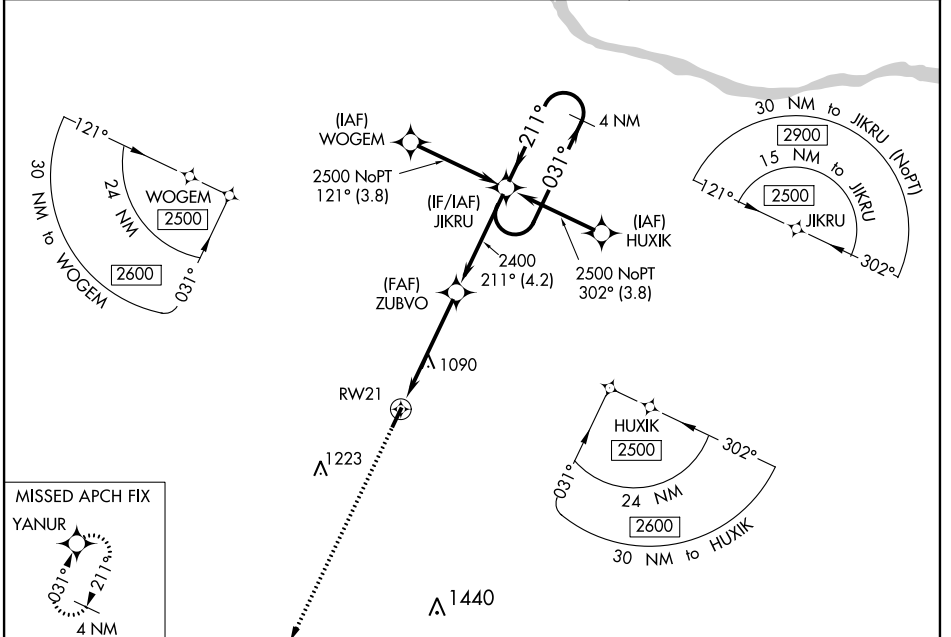
# RNAV (GPS) RWY 21

GENE SNYDER (K62)

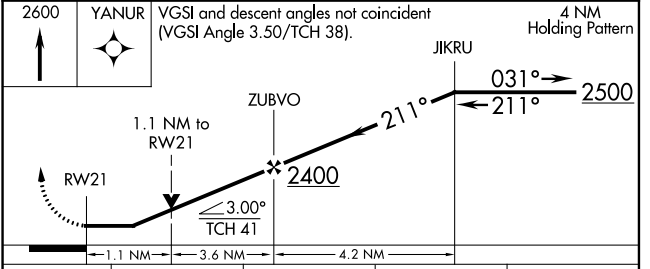
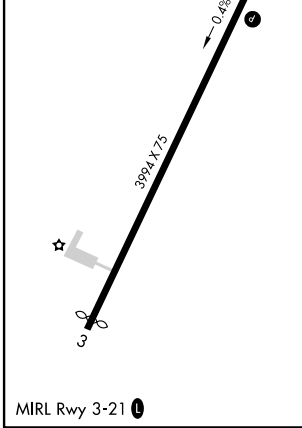
**⚠** DME/DME RNP-0.3 NA. When local altimeter setting not received, use Cincinnati/Northern Kentucky Intl altimeter setting and increase all MDA 60 feet. Night landing: Rwy 03 NA. Helicopter visibility reduction below 3/4 SM NA. VDP NA when using Cincinnati/Northern Kentucky Intl altimeter setting.

**⚠** MISSED APPROACH: Climb to 2600 direct YANUR and hold.

AWOS-3 <b>123.825</b>	CINCINNATI APP CON <b>121.0 254.25</b>	UNICOM <b>122.7 (CTAF) 0</b>
--------------------------	---	---------------------------------



ELEV <b>899</b>	TDZE <b>899</b>
-----------------	-----------------



CATEGORY	A	B	C	D
LP MDA	1340-1	441 (500-1)		NA
LNAV MDA	1360-1	461 (500-1)		NA
<b>C</b> CIRCLING	1400-1	501 (600-1)		NA

SE-1, 10 SEP 2020 to 08 OCT 2020

SE-1, 10 SEP 2020 to 08 OCT 2020