

WAAS CH <b>82005</b> <b>W16A</b>	APP CRS <b>163°</b>	Rwy Idg TDZE Apt Elev	<b>5000</b> <b>1515</b> <b>1535</b>
--	------------------------	-----------------------------	---

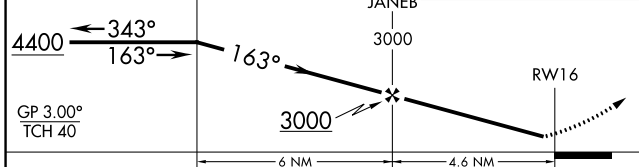
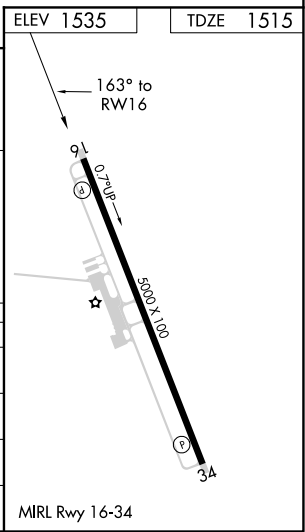
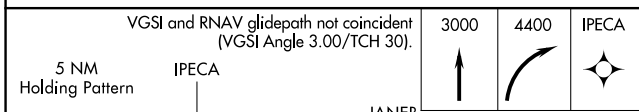
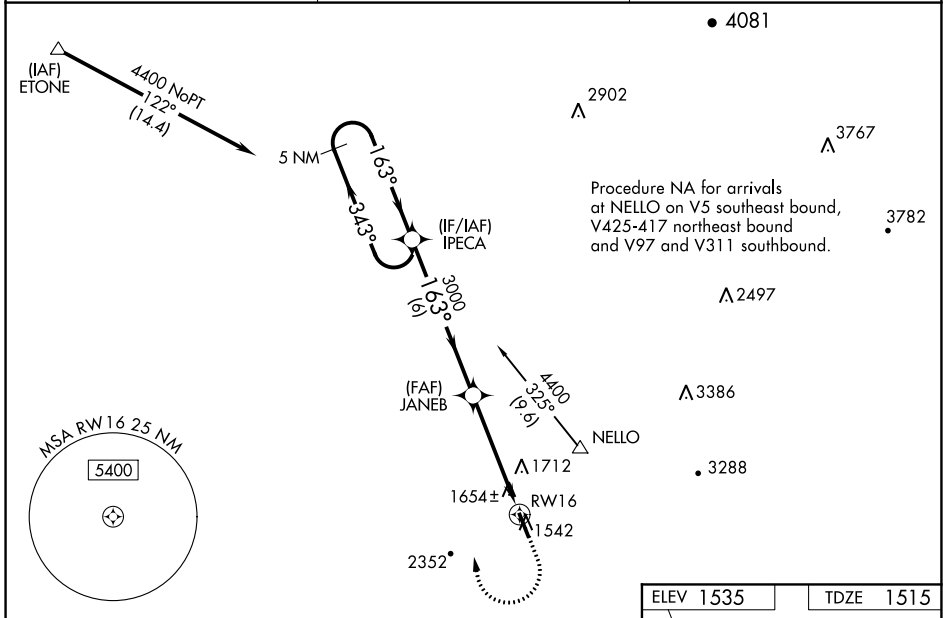
# RNAV (GPS) RWY 16

PICKENS COUNTY (JZP)

**NA** Baro-VNAV NA when using Canton altimeter setting. For uncompensated Baro-VNAV systems, LNAV/VNAV NA below -18°C (0°F) or above 54°C (130°F). DME/DME RNP-0.3 NA. Helicopter visibility reduction below ¾ SM NA. When local altimeter setting not received, use Canton altimeter setting and increase LPV DA to 1976 LNAV/VNAV DA to 1889 and all MDA 80 feet, increase LPV all Cats visibility to 1½, LNAV/VNAV all Cats visibility to 1¾, LNAV Cat C visibility to 1¾ and Circling Cat C visibility to 2¾.

**MISSED APPROACH:**  
Climb to 3000 then climbing right turn to 4400 direct IPECA and hold.

AWOS-3PT <b>118.55</b>	ATLANTA CENTER <b>133.1 342.425</b>	UNICOM <b>122.725</b> (CTAF)
---------------------------	--	---------------------------------



CATEGORY	A	B	C	D
LPV DA	1925-1⅜ 410 (400-1⅝)			NA
LNAV/VNAV DA	1838-1⅝ 323 (400-1⅝)			NA
LNAV MDA	1980-1	465 (500-1)	1980-1⅝ 465 (500-1⅝)	NA
CIRCLING	1980-1 445 (500-1)	2160-1 625 (700-1)	2360-2½ 825 (900-2½)	NA

SE-4, 10 SEP 2020 to 08 OCT 2020

SE-4, 10 SEP 2020 to 08 OCT 2020