

WAAS CH 77705 W34A	APP CRS 343°	Rwy Idg TDZE 1535 Apt Elev 1535
--	------------------------	---

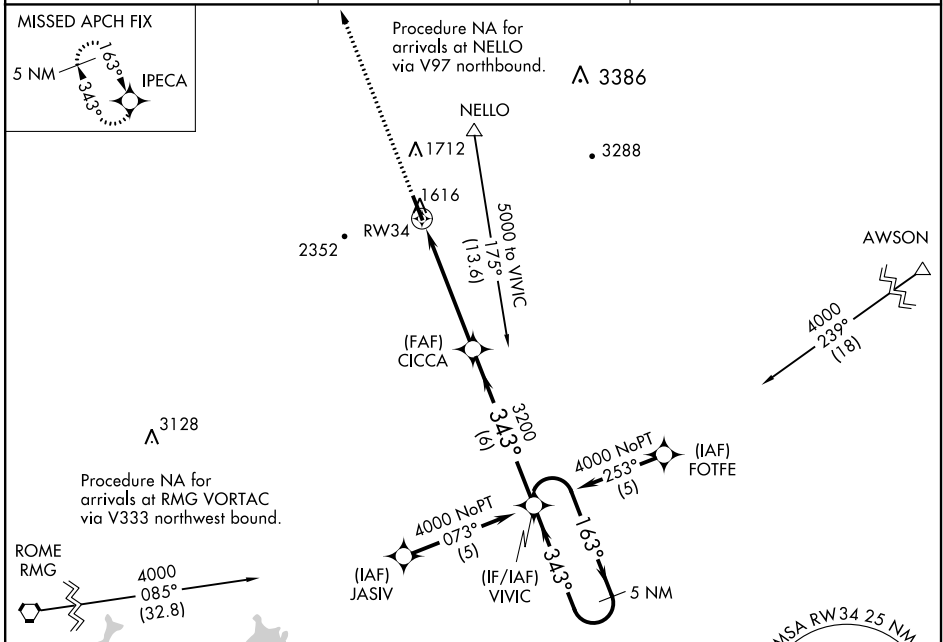
RNAV (GPS) RWY 34

PICKENS COUNTY (JZP)

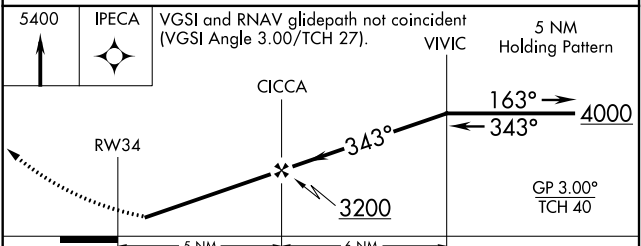
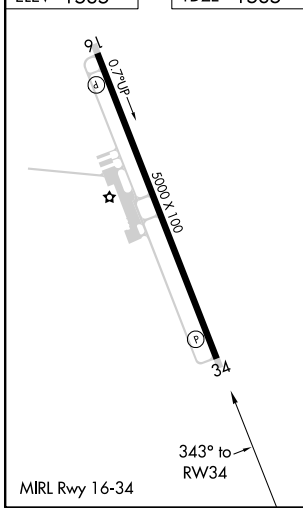
NA DME/DME RNP-0.3 NA. Visibility reduction by helicopters NA. If local altimeter setting not received, use Cobb County Intl-McCollum Field altimeter setting and increase all LPV DAs to 1922/MDAs 140 feet.

MISSED APPROACH: Climb to 5400 direct IPECA and hold, continue climb-in-hold to 5400.

AWOS-3PT 118.55	ATLANTA CENTER 133.1 342.425	UNICOM 122.725 (CTAF)
---------------------------	--	---------------------------------



ELEV 1535	TDZE 1535
-----------	-----------



CATEGORY	A	B	C	D
LPV DA		1789-1 254 (300-1)		NA
LNAV MDA		1880-1 345 (400-1)		NA
CIRCLING	1960-1 425 (500-1)	2160-1 625 (700-1)	2360-2½ 825 (900-2½)	NA

SE-4, 10 SEP 2020 to 08 OCT 2020

SE-4, 10 SEP 2020 to 08 OCT 2020