

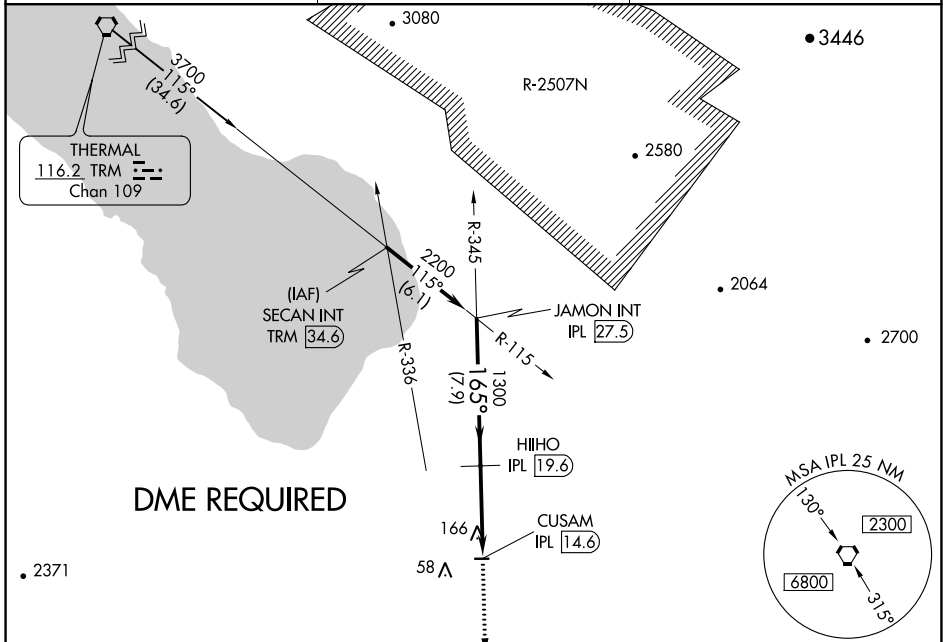
VORTAC IPL 115.9 Chan 106	APP CRS 165°	Rwy Idg TDZE Apt Elev	N/A N/A -129
---	------------------------	-----------------------------	---

VOR-B
BRAWLEY MUNI (BWC)

▼ Use Imperial County altimeter setting.
▲ NA DME Required.
Circling Rwy 8 NA at night.

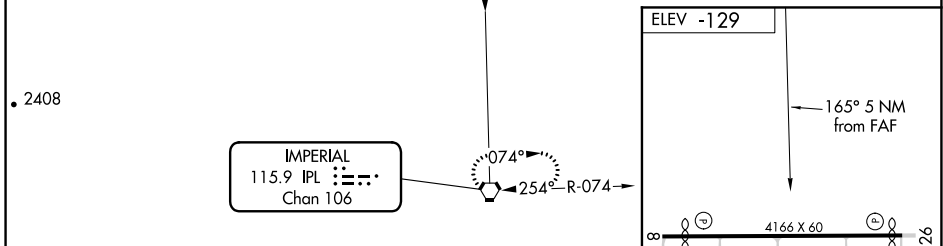
MISSED APPROACH: Climb to 3000 direct IPL VORTAC and hold.

IPL ASOS 132.175	LOS ANGELES CENTER 128.6 291.7	CTAF 122.9
----------------------------	--	----------------------



SW-3, 10 SEP 2020 to 08 OCT 2020

SW-3, 10 SEP 2020 to 08 OCT 2020



CATEGORY	JAMON INT IPL (27.5)		HIIHO IPL (19.6)		3000 IPL
	2200		1300		CUSAM IPL (14.6)
CIRCLING	7.9 NM		5 NM		NA
	A	B	C	D	
CIRCLING	560-1 689 (700-1)		NA		

