

WAAS CH <b>99714</b> <b>W36A</b>	APP CRS <b>355°</b>	Rwy Idg TDZE Apt Elev <b>5200</b> <b>733</b> <b>733</b>
--	------------------------	--

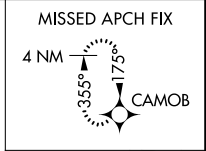
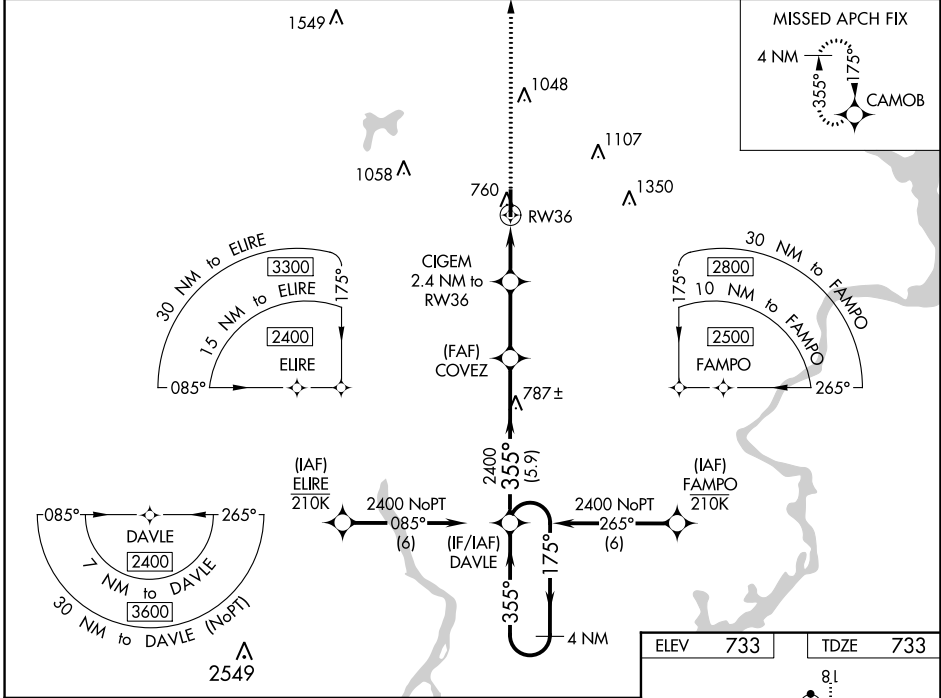
# RNAV (GPS) RWY 36

CLAREMORE RGNL (GCM)

▼ For uncompensated Baro-VNAV systems, LNAV/VNAV NA below -16°C (4°F) or above 54°C (130°F).  
DME/DME RNP-0.3 NA.

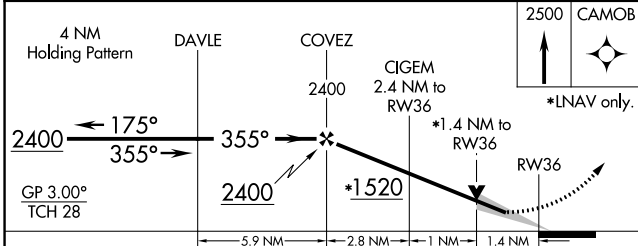
MISSED APPROACH: Climb to 2500 direct CAMOB and hold.

AWOS-3 <b>119.925</b>	TULSA APP CON <b>119.1 351.8</b>	UNICOM <b>122.7 (CTAF) 0</b>
--------------------------	-------------------------------------	---------------------------------

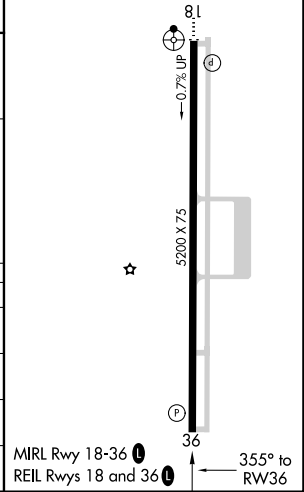


SC-1, 10 SEP 2020 to 08 OCT 2020

SC-1, 10 SEP 2020 to 08 OCT 2020



ELEV	733	TDZE	733
------	-----	------	-----



CATEGORY	A	B	C	D
LPV DA	983-¾	250 (300-¾)		NA
LNAV/VNAV DA	983-¾	250 (300-¾)		NA
LNAV MDA	1040-1	307 (400-1)	1040-1⅞ 307 (400-1⅞)	NA
CIRCLING	1260-1	527 (600-1)	1380-1¾ 647 (700-1¾)	NA