

VORTAC TUL <b>114.4</b> Chan <b>91</b>	APP CRS <b>060°</b>	Rwy Idg TDZE Apt Elev	<b>N/A</b> <b>N/A</b> <b>733</b>
--	------------------------	-----------------------------	--

# VOR/DME-B

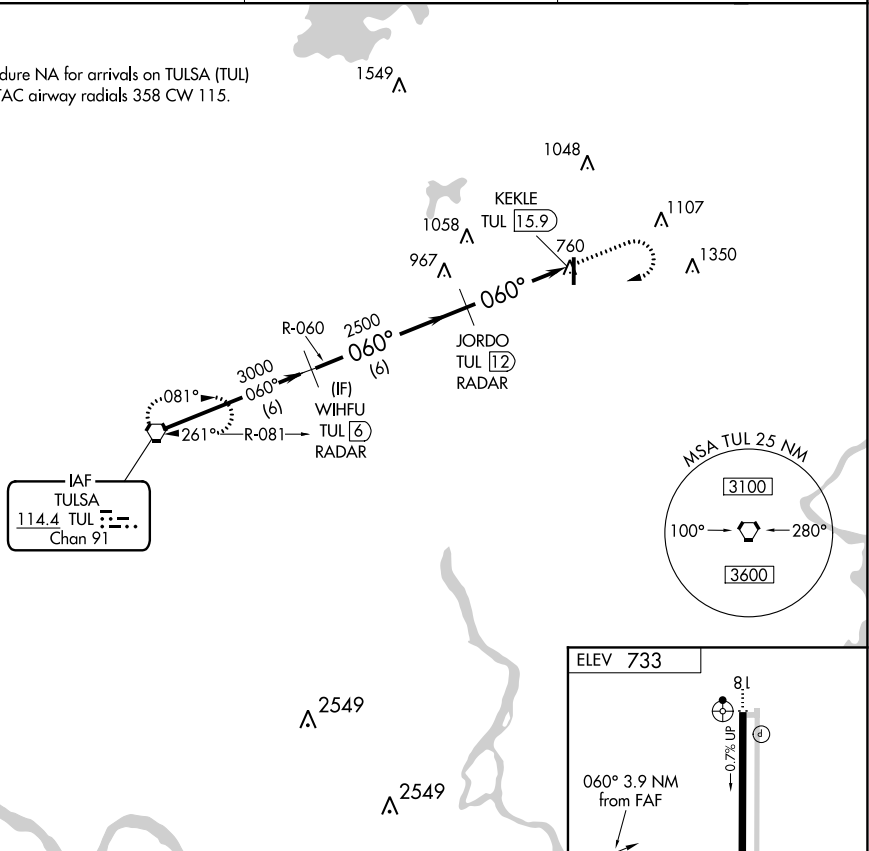
CLAREMORE RGNL (GCM)

**▽** If local altimeter setting not received, use Tulsa Intl altimeter setting and increase all MDAs 60 feet.

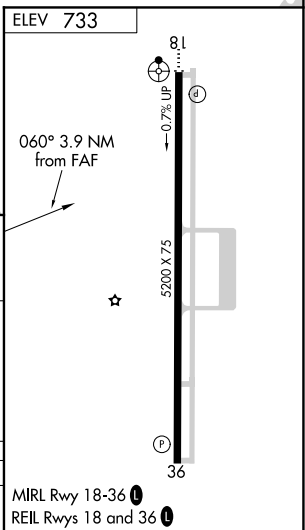
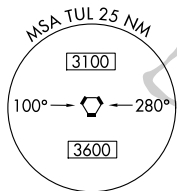
**MISSED APPROACH:** Climb to 2500 then climbing right turn to 3000 direct TUL VORTAC and hold.

AWOS-3 <b>119.925</b>	TULSA APP CON <b>119.1 351.8</b>	UNICOM <b>122.7 (CTAF) ①</b>
--------------------------	-------------------------------------	---------------------------------

Procedure NA for arrivals on TULSA (TUL)  
VORTAC airway radials 358 CW 115.



IAF  
TULSA  
**114.4 TUL** ---  
Chan **91**



Procedure Turn NA	WIHFU TUL (6) RADAR	JORDO TUL (12) RADAR	KEKLE TUL (15.9)	TUL VORTAC
	3000	2500	2500	3000
	6 NM	3.9 NM		
CATEGORY	A	B	C	D
① CIRCLING	1260-1	527 (600-1)	1380-1¾ 647 (700-1¾)	NA

SC-1, 10 SEP 2020 to 08 OCT 2020

SC-1, 10 SEP 2020 to 08 OCT 2020