

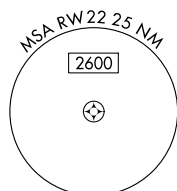
APP CRS	Rwy Idg	N/A
216°	TDZE	N/A
	Apt Elev	419

# RNAV (GPS)-B

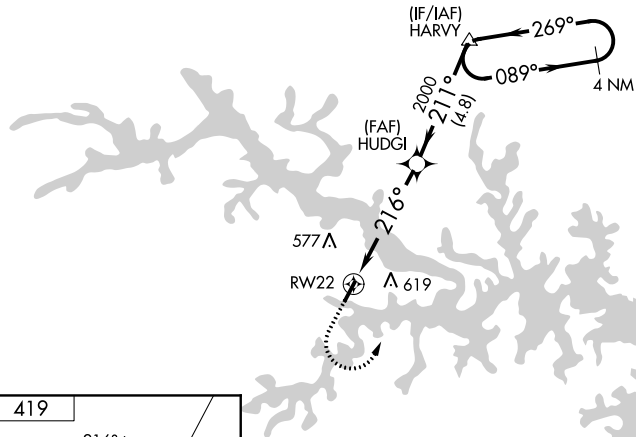
LAKE COUNTY RGNL (W63)

<p><b>⚠</b> DME/DME RNP-0.3 NA. Procedure NA at night. When local altimeter setting not received, use Chase City altimeter setting and increase all MDA 40 feet. Helicopter visibility reduction below 1 SM NA.</p>	<p>MISSED APPROACH: Climbing left turn to 3000 direct HARVY and hold.</p>
---	---

<p>AWOS-3 <b>118.225</b></p>	<p>WASHINGTON CENTER <b>118.75 377.1</b></p>	<p>CTAF <b>122.9</b></p>
----------------------------------	--	------------------------------

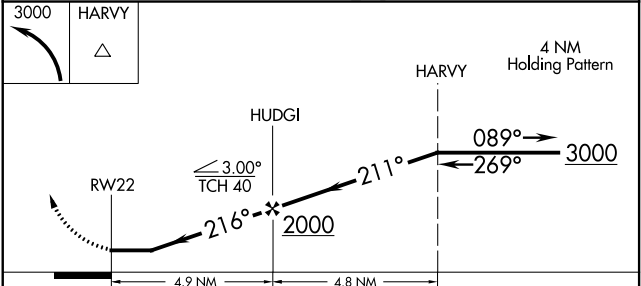
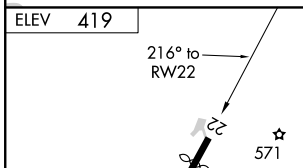


NoPT for arrival at HARVY on V3 southwest bound and on V266 westbound.



NE-3, 10 SEP 2020 to 08 OCT 2020

NE-3, 10 SEP 2020 to 08 OCT 2020



MRL Rwy 4-22

CATEGORY	A	B	C	D
<b>C</b> CIRCLING	1420-3	1001 (1100-3)	NA	