

| | | |
|---------------------------------|------------------------|---|
| WAAS CH 48929 W15A | APP CRS 148° | Rwy Idg 2997 TDZE 345 Apt Elev 345 |
|---------------------------------|------------------------|---|

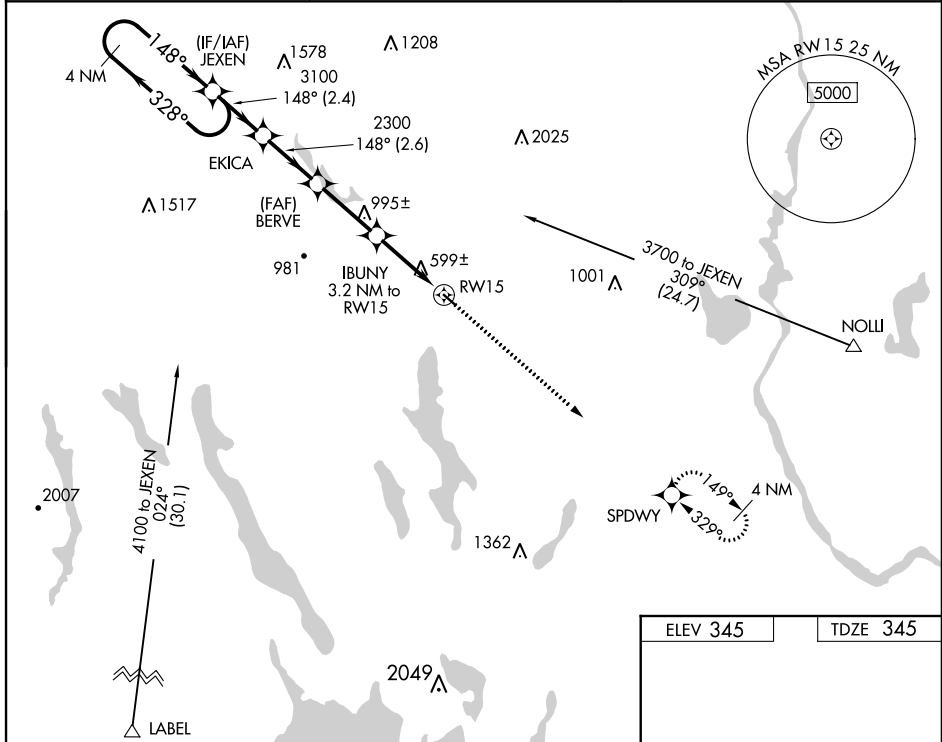
RNAV (GPS) RWY 15

OXFORD COUNTY RGNL (81B)

NA DME/DME RNP-0.3 NA. Procedure NA at night. Use Auburn/Lewiston altimeter setting; when not received, use Fryeburg altimeter setting and increase all MDA 40 feet, increase Circling Cat B visibility to 1½. Helicopter visibility reduction below 1 SM NA.

MISSED APPROACH: Climb to 3600 direct SPDWY and hold, continue climb-in-hold to 3600.

| | | |
|------------------------------|--|---------------------------------|
| LEW AWOS-3 118.025 | PORTLAND APP CON ★ 125.5 353.9 | UNICOM 122.8 (CTAF) 0 |
|------------------------------|--|---------------------------------|



NE-1, 10 SEP 2020 to 08 OCT 2020

NE-1, 10 SEP 2020 to 08 OCT 2020

| | | | | |
|----------------------|-------------------------|-----------------------------|----------|----------|
| 4 NM Holding Pattern | JEXEN | Visual Segment - Obstacles. | 3600 | SPDWY |
| 3700 ← 328° | → 148° | → 148° | ↑ | ✧ |
| | 3100 | 2300 | | |
| | → 2.4 NM | → 2.6 NM | → 2.8 NM | → 3.2 NM |
| CATEGORY | A | B | C | D |
| LP MDA | 900-1 | 555 (600-1) | | NA |
| LNVA MDA | 1140-1 795 (800-1) | 1140-1¼ 795 (800-1¼) | | NA |
| CIRCLING | 1220-1¼ 875 (900-1¼) | 1260-1¼ 915 (1000-1¼) | | NA |

