

APP CRS	Rwy Idg	N/A
104°	TDZE	N/A
	Apt Elev	409

RNAV (GPS)-B

HARFORD COUNTY (ØW3)

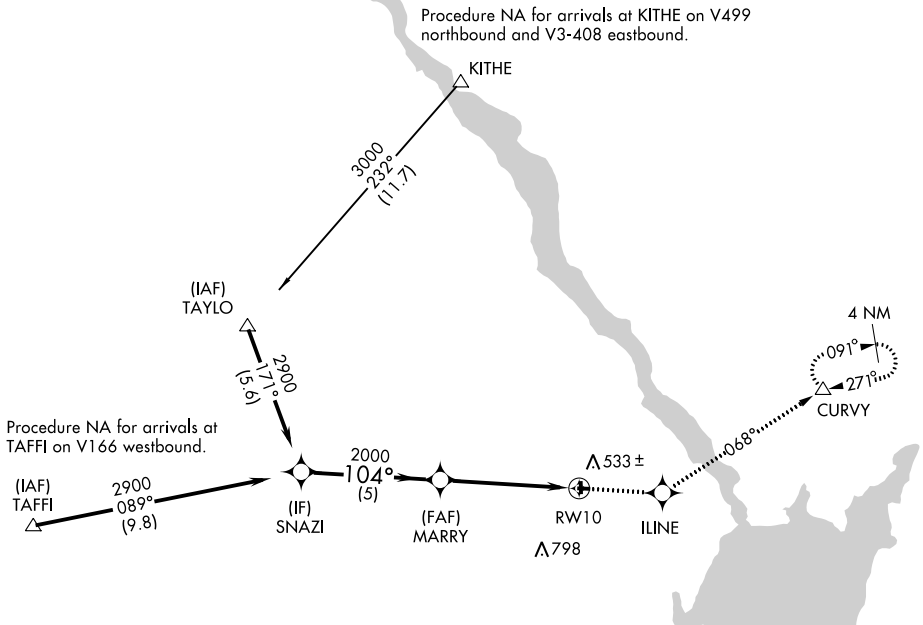
RNP APCH.

▼ Use Phillips AAF altimeter setting; when not received use Baltimore/Washington Intl Thurgood Marshall altimeter setting and increase MDA 60 feet. Circling NA to Rwy's 1, 14, 19 and 32.

MISSED APPROACH: Climb to 3000 direct ILINE and on track 068° to CURVY and hold, continue climb-in-hold to 3000.

POTOMAC APP CON
125.525 291.625

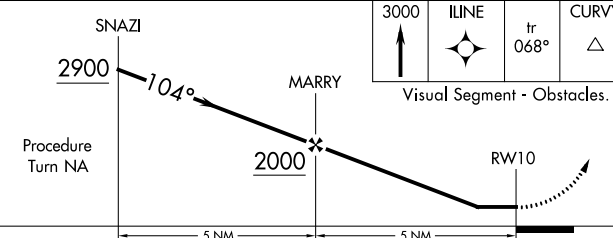
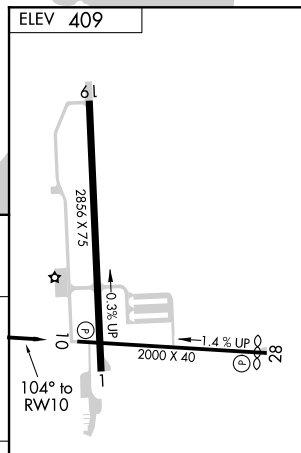
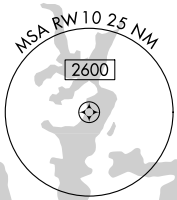
UNICOM
122.8 (CTAF) 0



NE-3, 10 SEP 2020 to 08 OCT 2020

NE-3, 10 SEP 2020 to 08 OCT 2020

1289
▲



CATEGORY	A	B	C	D
CIRCLING	960-1 551 (600-1)		NA	

MIRL Rwy 1-19 0
REIL Rwy's 1 and 19 0
REIL Rwy's 10 and 28