

RNAV (GPS) Y RWY 32

BETHEL RGNL (0B1)

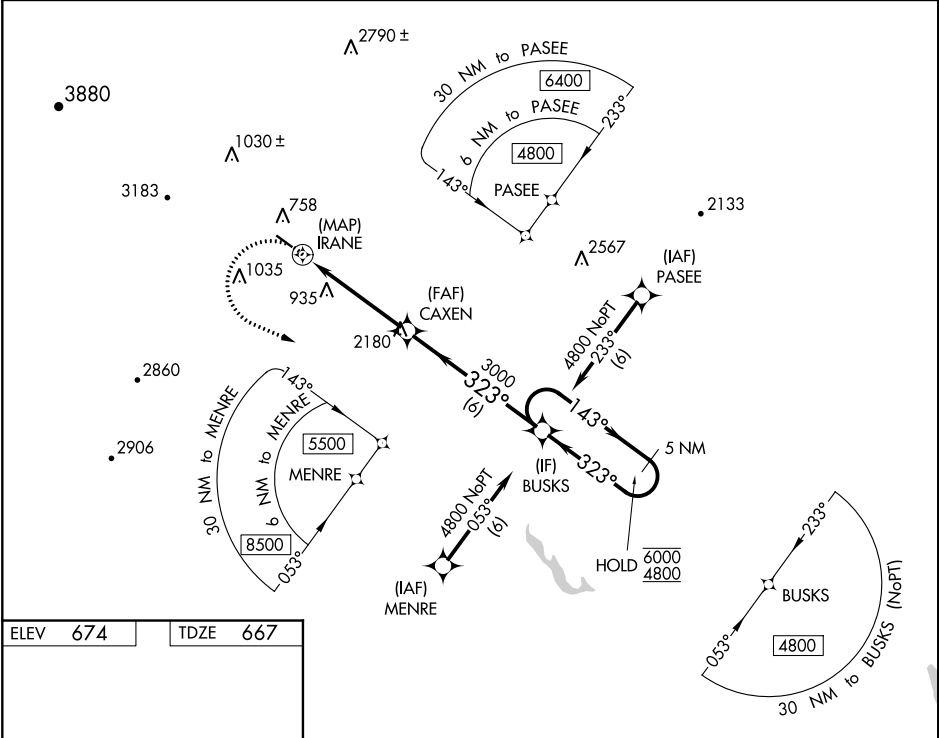
APP CRS	Rwy ldg	3818
323°	TDZE	667
	Apt Elev	674

RNP APCH.

NA Circling Rwy 14 NA at night. Rwy 32 helicopter visibility reduction below 3/4 SM NA. When local altimeter setting not received, use Augusta altimeter setting and increase all MDAs 160 feet. Caution any go-around after passing IRANE, may not provide standard obstacle clearance.

MISSED APPROACH: Climbing left turn to 4800 direct BUSKS and hold then, continue climb-in-hold.

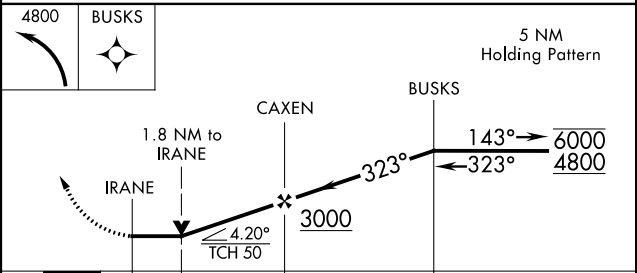
AWOS-AV	PORTLAND APP CON*	CTAF
122.9	125.5 269.35	122.9



ELEV	674	TDZE	667
------	------------	------	------------

MIRL Rwy 14-32 **1**

REIL Rwy 32 **1**



CATEGORY	A	B	C	D
LNAV MDA	1740-1½	1073 (1100-1½)	NA	
C CIRCLING	1740-1½	2260-1½	NA	
	1066 (1100-1½)	1586 (1600-1½)		

NE-1, 10 SEP 2020 to 08 OCT 2020

NE-1, 10 SEP 2020 to 08 OCT 2020