

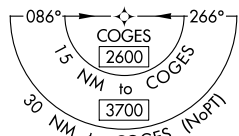
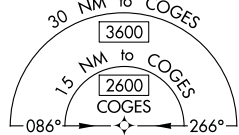
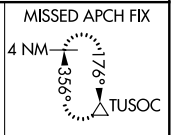
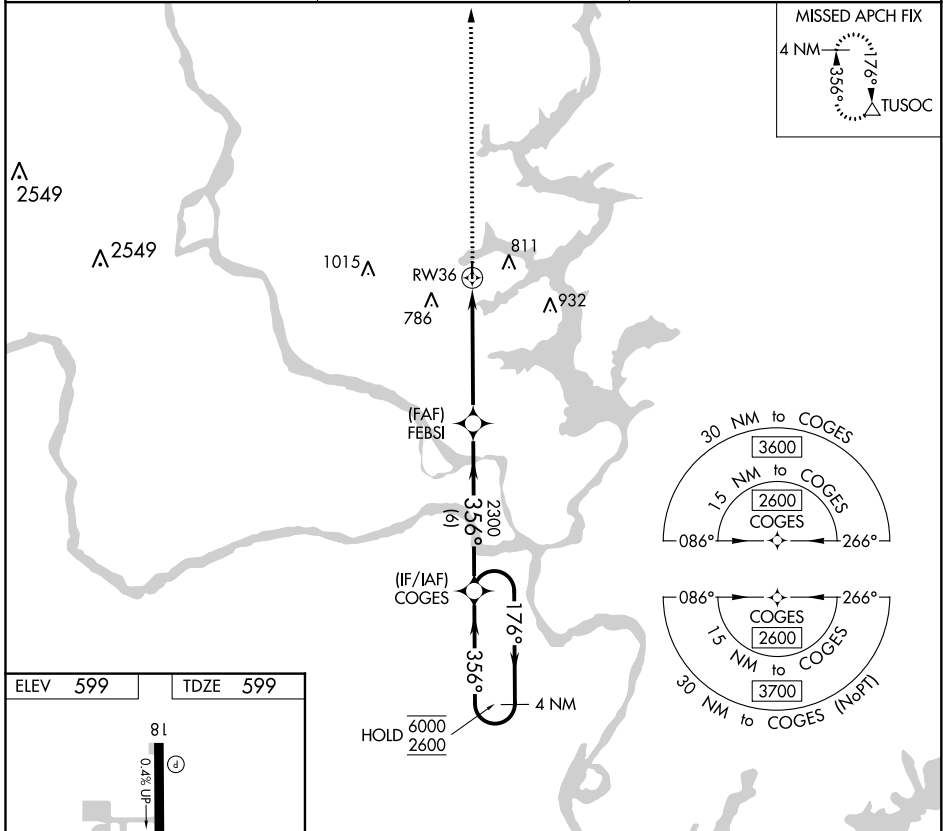
# RNAV (GPS) RWY 36

HEFNER-EASLEY (H68)

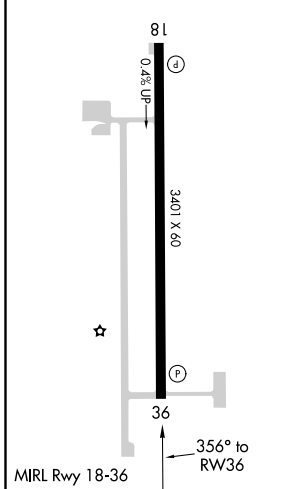
APP CRS <b>356°</b>	Rwy Idg <b>3401</b>
	TDZE <b>599</b>
	Apt Elev <b>599</b>

RNP APCH. Procedure NA at night. Helicopter visibility reduction below 1 SM NA. Use Pryor altimeter setting. MISSED APPROACH: Climb to 2500 direct TUSOC and hold.

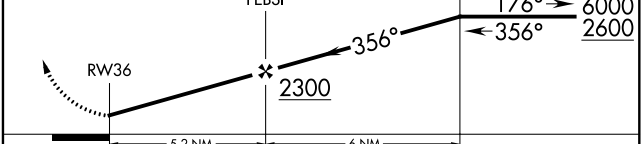
H71 AWOS-3PT <b>120.1</b>	TULSA APP CON <b>119.1 351.8</b>	CTAF <b>122.9</b>
------------------------------	-------------------------------------	----------------------



ELEV 599	TDZE 599
----------	----------



2500 TUSOC Visual Segment - Obstacles. 4 NM Holding Pattern



CATEGORY	A	B	C	D
LNAV MDA	1140-1	541 (600-1)	NA	
<b>C</b> CIRCLING	1160-1	561 (600-1)	NA	

SC-1, 10 SEP 2020 to 08 OCT 2020

SC-1, 10 SEP 2020 to 08 OCT 2020